



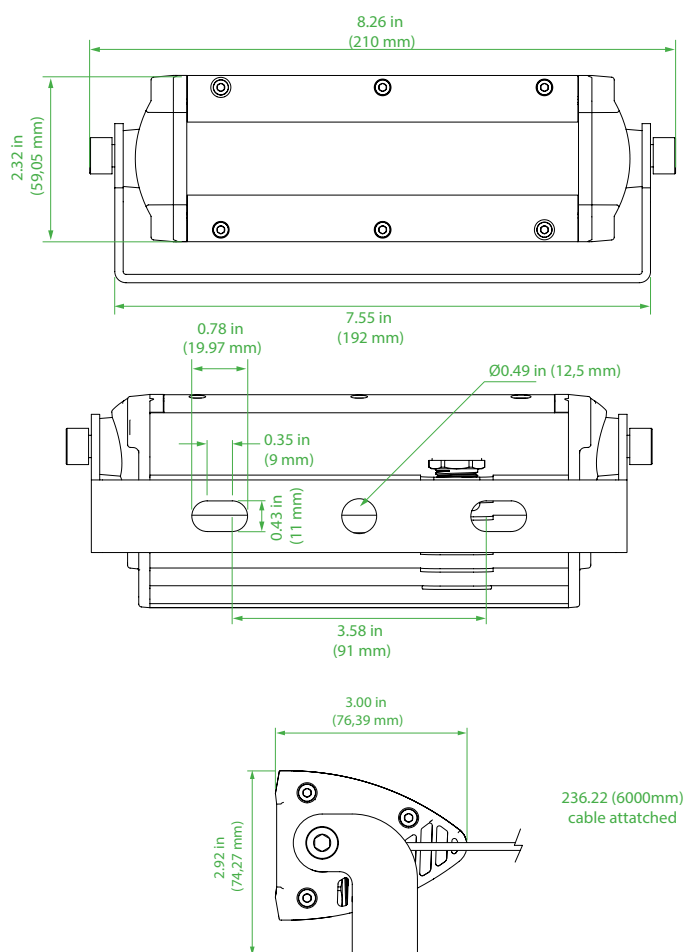
## FLLB Series

Flood LED Light Bar 10Watt 1.600Lumens

LED flood lights applicable for decks and technical in- and outdoor applications. Supplied with an internal driver and standard supplied with 6mtr power cable.



### Dimensions



### Technical Information

<b>Material:</b>	Powder coated anodized seawater resistant aluminium White Trim Ring (optional colours on request *1)
<b>Finish:</b>	White
<b>Hardware:</b>	Marine grade A4 316 stainless steel
<b>Lens:</b>	100°
<b>IP Rating:</b>	IP67
<b>Light Source:</b>	10Watt 160Lumens per Watt Natural White 3900K CRI > 85
<b>Power Source:</b>	85-265Vac 50~60Hz (10-30Vdc optional) Potted driver
<b>Ambient Temperature:</b>	Operating Temperature -40°C ~ +55°
<b>Cable :</b>	Supplied with 6mtr power cable
<b>Mounting:</b>	Adjustable A4 316 Stainless Steel bracket 4mm thickness (optional 360° rotatable bracket available *1) (optional stacking brackets available *2)
<b>Fixture weight:</b>	3.19 lbs (1,45 kg)

### Compliances

In compliance with rules of maritime classification societies, additional VDE and IEC 60092-306.  
(Equipment luminaires and lighting accessories for use on vessels)

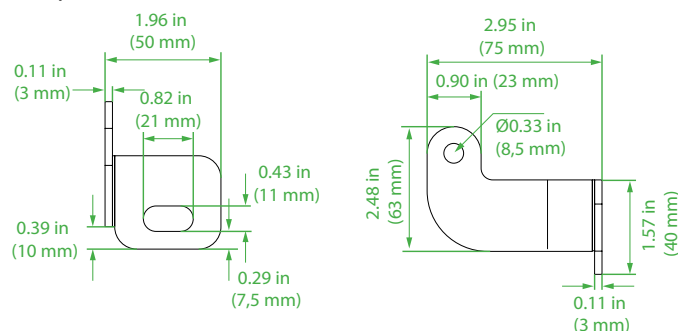
## FLLB Series

Flood LED Light Bar 10Watt 1.600Lumens

### Ordering information

Article No.:	Beam Angle	Light Colour	Voltage	Finish	Specialties
FLLB-010-39WH-HV	Wide Beam 100°	3900K Natural White	85-265Vac 50~60Hz	White	Standard 6mtr power cable
FLLB-010-39WH-LV	Wide Beam 100°	3900K Natural White	10-30Vdc	White	Standard 6mtr power cable
FLLB-010-39WH-RT-HV	Wide Beam 100°	3900K Natural White	85-265Vac 50~60Hz	White	Standard 6mtr power cable & 360° rotatable bracket
FLLB-010-39WH-RT-LV	Wide Beam 100°	3900K Natural White	10-30Vdc	White	Standard 6mtr power cable & 360° rotatable bracket

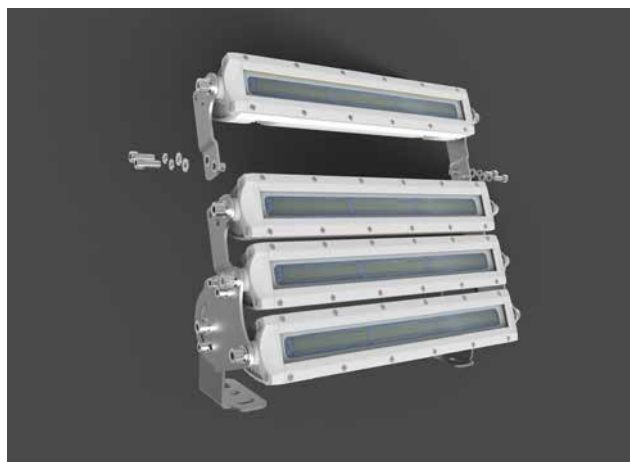
\*1 Optional 360° rotatable bracket:



\*2 Optional stacking brackets:

For stacking two lights you need a FLLB-SB-BASE Set

For stacking three lights you need a FLLB-SB-TOP Set, for extra lights an extra FLLB-SB-TOP Set is required



### Special Projects

We may be able to accommodate your special projects, so please don't hesitate to ask about additional options. Minimum order quantities and/or extended lead times will apply. Contact your E-LED Lighting representative with specific inquiries.

Product design and specifications are subject to change without notice. The most current specification sheets can be found at [www.E-LEDLighting.com](http://www.E-LEDLighting.com)

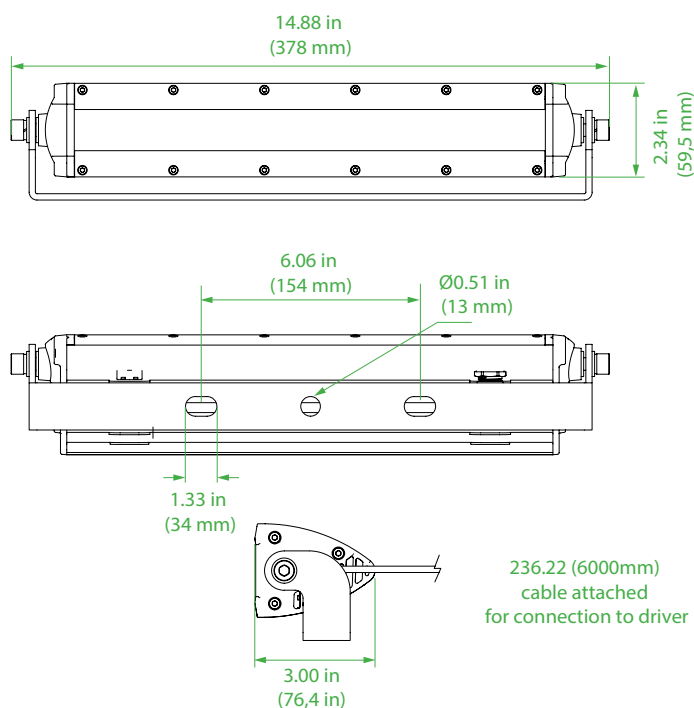


## FLLB Series

Flood LED Light Bar 30Watt 4.800Lumens

*LED flood lights applicable for decks and technical in- and outdoor applications. Supplied with an external dimmable driver.  
Available with 360° rotatable bracket or stacking brackets.*

### Dimensions



### Technical Information

<b>Material:</b>	Powder coated anodized seawater resistant aluminium
	White Trim Ring (optional colours on request *1)
<b>Finish:</b>	White
<b>Hardware:</b>	Marine Grade A4 316 stainless steel
<b>Lens:</b>	100°
<b>IP Rating:</b>	IP67
<b>Light Source:</b>	30Watt
	160Lumens per Watt
	Natural White 3900K
	CRI > 85
<b>Power Source:</b>	External driver
	100-305Vac 50 ~60Hz (10-30Vdc optional)
	Meanwell HLG-40H-48B
	Dimmable driver (0-10Vdc – PWM – resistance)
	Potted driver
<b>Ambient Temperature:</b>	Operating Temperature -40°C ~ +55°
<b>Cable :</b>	Supplied with 6mtr power cable
<b>Mounting:</b>	Adjustable A4 316 Stainless Steel bracket
	thickness (optional 360° rotatable bracket available *1)
	(optional stacking brackets available *2)
<b>Fixture weight:</b>	7.05 lbs (3,2 kg)

### Compliances

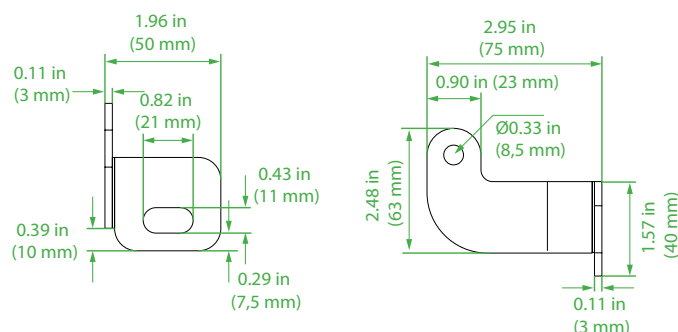
In compliance with rules of maritime classification societies, additional VDE and IEC 60092-306.  
(Equipment luminaires and lighting accessories for use on vessels)

## FLLB Series

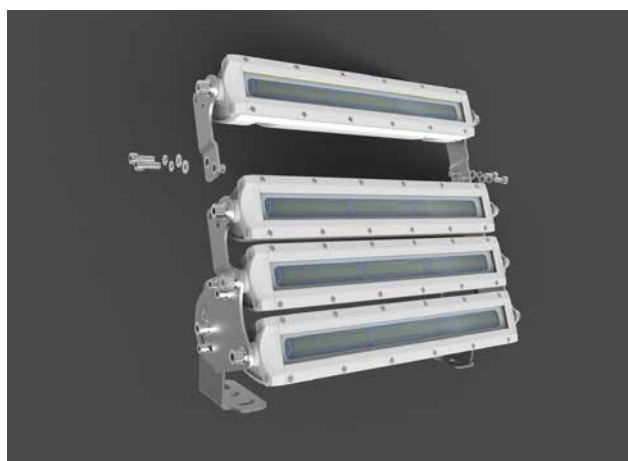
Flood LED Light Bar 30Watt 4.800Lumens

### Ordering information

Article No.:	Beam Angle	Light Colour	Voltage	Finish	Specialties
FLLB-030-39WH-HV	Wide Beam 100°	3900K Natural White	100-305Vac 50 ~60Hz	White	Supplied with dimmable external driver
FLLB-030-39WH-LV	Wide Beam 100°	3900K Natural White	10-30Vdc	White	Supplied with dimmable external driver
FLLB-030-39WH-RT-HV	Wide Beam 100°	3900K Natural White	100-305Vac 50 ~60Hz	White	Supplied with dimmable external driver & 360° rotatable bracket
FLLB-030-39WH-RT-LV	Wide Beam 100°	3900K Natural White	10-30Vdc	White	Supplied with dimmable external driver & 360° rotatable bracket



\*1 Optional 360° rotatable bracket:



\*2 Optional stacking brackets:

For stacking two lights you need a FLLB-SB-BASE Set

For stacking three lights you need a FLLB-SB-TOP Set, for extra lights an extra FLLB-SB-TOP Set is required

### Special Projects

We may be able to accommodate your special projects, so please don't hesitate to ask about additional options. Minimum order quantities and/or extended lead times will apply. Contact your E-LED Lighting representative with specific inquiries.

Product design and specifications are subject to change without notice. The most current specification sheets can be found at [www.E-LEDLighting.com](http://www.E-LEDLighting.com)

E-LED Lighting BV & Inc.

European Office: Tel: +31 (0)346 28 62 62, E-mail [Info@E-LEDLighting.com](mailto:Info@E-LEDLighting.com)

United States Office: Tel: +1 (561) 776-1702, E-mail [Info@E-LEDLighting.com](mailto:Info@E-LEDLighting.com)

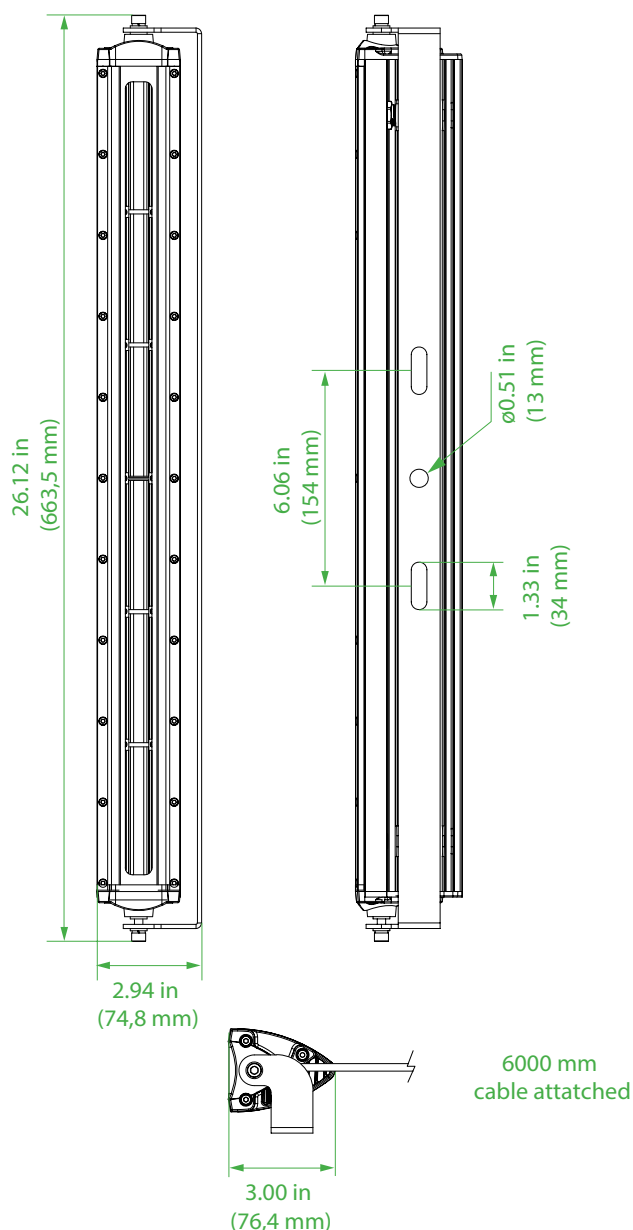
## FLLB Series

Flood LED Light Bar 60Watt 9.600Lumens

*LED flood lights applicable for decks and technical in- and outdoor applications. Supplied with an external dimmable driver.  
Available with 360° rotatable bracket or stacking brackets.*



### Dimensions



### Technical Information

<b>Material:</b>	Powder coated anodized seawater resistant aluminium
	White Trim Ring (optional colours on request *1)
<b>Finish:</b>	White
<b>Hardware:</b>	Marine grade A4 316 stainless steel
<b>Lens:</b>	100°
<b>IP Rating:</b>	IP67
<b>Light Source:</b>	60Watt
	160Lumens per Watt
	Natural White 3900K
	CRI > 85
<b>Power Source:</b>	External driver
	100-305Vac 50 ~60Hz (10-30Vdc optional)
	Meanwell HLG-60H-42B
	Dimmable driver (0-10Vdc – PWM – resistance)
	Potted driver
<b>Ambient Temperature:</b>	Operating Temperature -40°C ~ +55°
<b>Cable :</b>	Supplied with 6mtr power cable
<b>Mounting:</b>	Adjustable A4 316 Stainless Steel bracket
	4mm thickness (optional 360° rotatable bracket available *1)
	(optional stacking brackets available *2)
<b>Fixture weight:</b>	10.03 lbs (4,55 kg)

### Compliances

In compliance with rules of maritime classification societies, additional VDE and IEC 60092-306.  
(Equipment luminaires and lighting accessories for use on vessels)

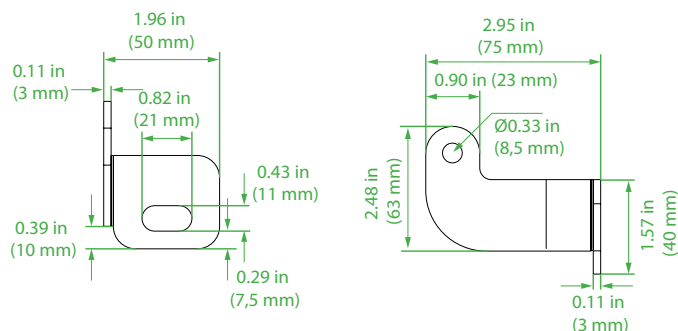


## FLLB Series

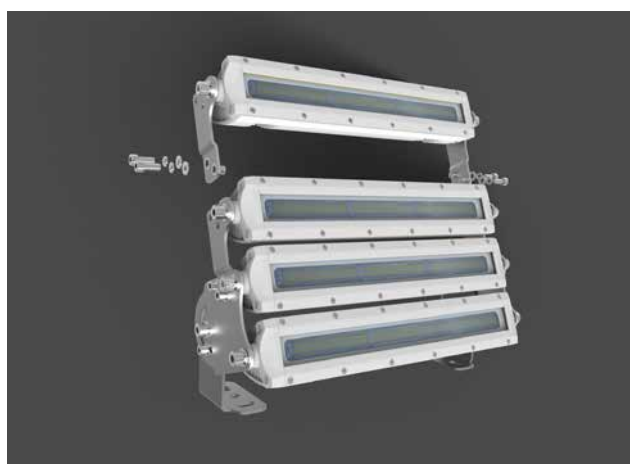
Flood LED Light Bar 60Watt 9.600Lumens

### Ordering information

Article No.:	Beam Angle	Light Colour	Voltage	Finish	Specialties
FLLB-060-39WH-HV	Wide Beam 100°	3900K Natural White	100-305Vac 50 ~60Hz	White	Supplied with external dimmable driver
FLLB-060-39WH-LV	Wide Beam 100°	3900K Natural White	10-30Vdc	White	Supplied with external dimmable driver
FLLB-060-39WH-RT-HV	Wide Beam 100°	3900K Natural White	100-305Vac 50 ~60Hz	White	Supplied with dimmable external driver & 360° rotatable bracket
FLLB-060-39WH-RT-LV	Wide Beam 100°	3900K Natural White	10-30Vdc	White	Supplied with dimmable external driver & 360° rotatable bracket



\*1 Optional 360° rotatable bracket:



\*2 Optional stacking brackets:

For stacking two lights you need a FLLB-SB-BASE Set

For stacking three lights you need a FLLB-SB-TOP Set, for extra lights an extra FLLB-SB-TOP Set is required

### Special Projects

We may be able to accommodate your special projects, so please don't hesitate to ask about additional options. Minimum order quantities and/or extended lead times will apply. Contact your E-LED Lighting representative with specific inquiries.

Product design and specifications are subject to change without notice. The most current specification sheets can be found at [www.E-LEDLighting.com](http://www.E-LEDLighting.com)

E-LED Lighting BV & Inc.

European Office: Tel: +31 (0)346 28 62 62, E-mail [Info@E-LEDLighting.com](mailto:Info@E-LEDLighting.com)

United States Office: Tel: +1 (561) 776-1702, E-mail [Info@E-LEDLighting.com](mailto:Info@E-LEDLighting.com)

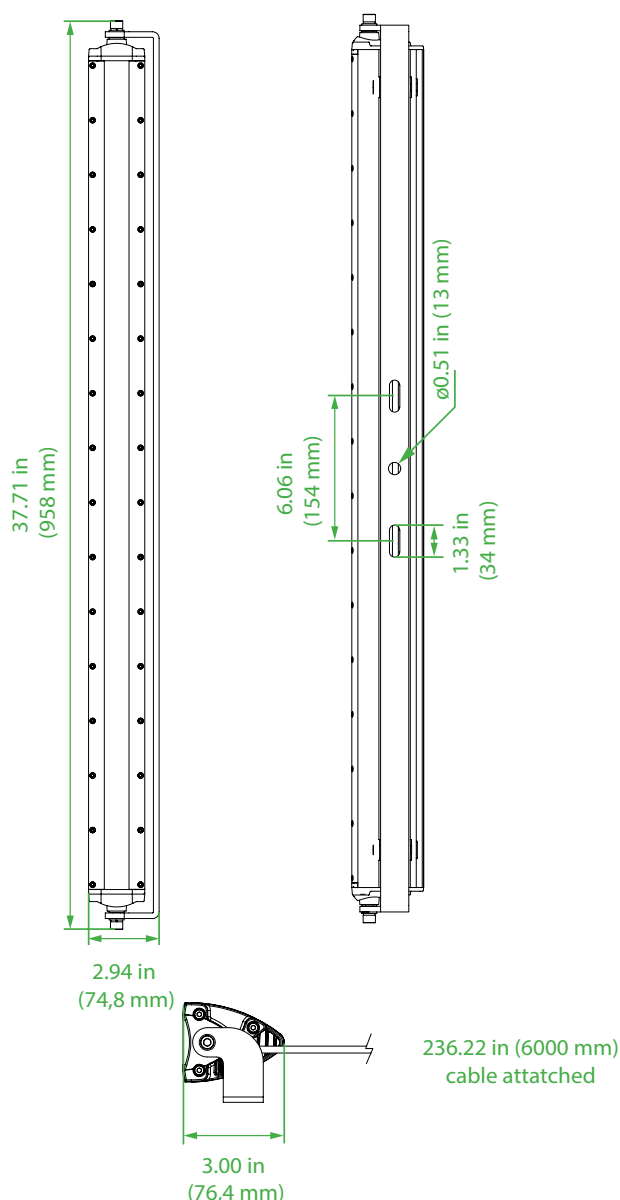
## FLLB Series

Flood LED Light Bar 90Watt 14.400Lumens

*LED flood lights applicable for decks and technical in- and outdoor applications. Supplied with an external dimmable driver.  
Available with 360° rotatable bracket or stacking brackets.*



### Dimensions



### Technical Information

<b>Material:</b>	Powder coated anodized seawater resistant aluminium
	White Trim Ring (optional colours on request *1)
<b>Finish:</b>	White
<b>Hardware:</b>	Marine grade A4 316 stainless steel
<b>Lens:</b>	100°
<b>IP Rating:</b>	IP67
<b>Light Source:</b>	90Watt
	160Lumens per Watt
	Natural White 3900K
	CRI > 85
<b>Power Source:</b>	External driver
	100-305Vac 50 ~60Hz
	Meanwell HLG-100H-42B
	Dimmable driver
	Potted driver
<b>Ambient Temperature:</b>	Operating Temperature -40°C ~ +55°
<b>Cable :</b>	Supplied with 6mtr power cable
<b>Mounting:</b>	Adjustable A4 316 Stainless Steel bracket
	4mm thickness (optional 360° rotatable bracket available *1)
	(optional stacking brackets available *2)
<b>Fixture weight:</b>	14.88 lbs (6,75 kg)

### Compliances

In compliance with rules of maritime classification societies, additional VDE and IEC 60092-306.  
(Equipment luminaires and lighting accessories for use on vessels)

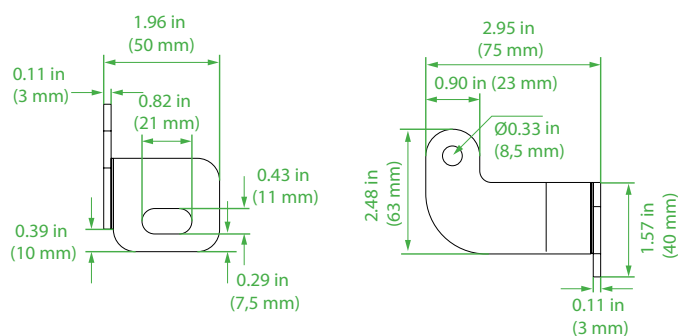


## FLLB Series

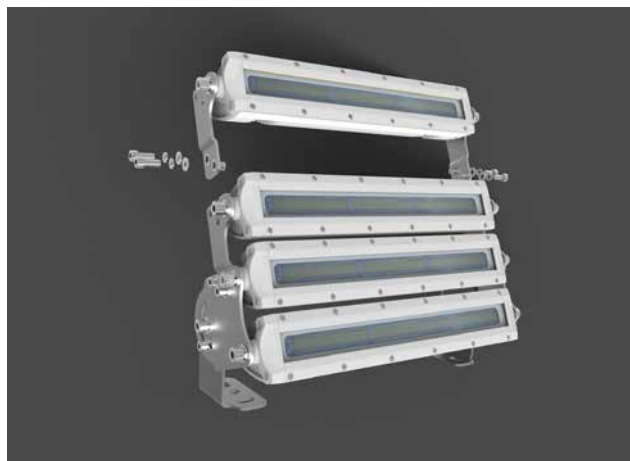
Flood LED Light Bar 90Watt 14.400Lumens

### Ordering information

Article No.:	Beam Angle	Light Colour	Voltage	Finish	Specialties
FLLB-090-39WH-HV	Wide Beam 100°	3900K Natural White	100-305Vac 50 ~60Hz	White	Supplied with external dimmable driver
FLLB-090-39WH-RT-HV	Wide Beam 100°	3900K Natural White	100-305Vac 50 ~60Hz	White	Supplied with dimmable external driver & 360° rotatable bracket



\*1 Optional 360° rotatable bracket:



\*2 Optional stacking brackets:

For stacking two lights you need a FLLB-SB-BASE Set

For stacking three lights you need a FLLB-SB-TOP Set, for extra lights an extra FLLB-SB-TOP Set is required

### Special Projects

We may be able to accommodate your special projects, so please don't hesitate to ask about additional options. Minimum order quantities and/or extended lead times will apply. Contact your E-LED Lighting representative with specific inquiries.

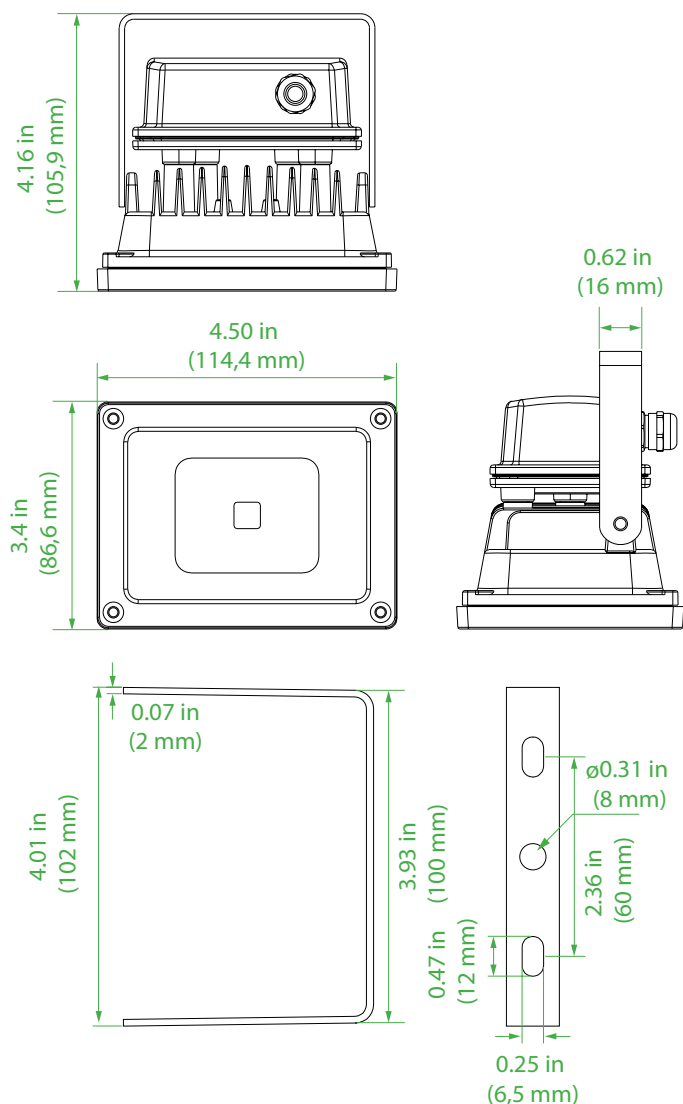
## FL Series

## Marine LED Floodlight 10Watt 1.200Lumens

*LED flood lights applicable for decks and technical in- and outdoor applications.*



## Dimensions



## Technical Information

<b>Material:</b>	Powder coated anodized seawater resistant aluminium
<b>Finish:</b>	White
<b>Hardware:</b>	Marine grade A4 316 stainless steel
<b>Lens:</b>	80°
<b>IP Rating:</b>	IP67
<b>Light Source:</b>	10Watt
	120Lumens per Watt
	Natural White 3900K
	CRI > 85
<b>Power Source:</b>	85-265Vac 50 ~60Hz (10-30Vdc optional)
	Overload, over-voltage, over-temperature and short circuit protection.
	Potted driver
<b>Ambient Temperature:</b>	Operating temperature -40°C ~ +55°
<b>Cable Entry:</b>	1 x M20 Cable Gland Polyamide (PA)
<b>Mounting:</b>	Adjustable A4 316 Stainless Steel bracket
	0.11 in (3 mm) thickness
<b>Fixture weight:</b>	1.43 lbs (0,65 kg)

## Compliances

In compliance with rules of maritime classification societies,  
additional VDE and IEC 60092-306.  
(Equipment luminaires and lighting accessories for use on vessels)

## FL Series

Marine LED Floodlight 10Watt 1.200Lumens

### Ordering information

Article No.:	Beam Angle	Light Colour	Voltage	Finish	Specialties
FL020212-HV	Wide Beam 80°	3900K Natural White	85-265Vac 50 ~60Hz	White	
FL020212-LV	Wide Beam 80°	3900K Natural White	10-30Vdc	White	

### Special Projects

We may be able to accommodate your special projects, so please don't hesitate to ask about additional options. Minimum order quantities and/or extended lead times will apply. Contact your E-LED Lighting representative with specific inquiries.

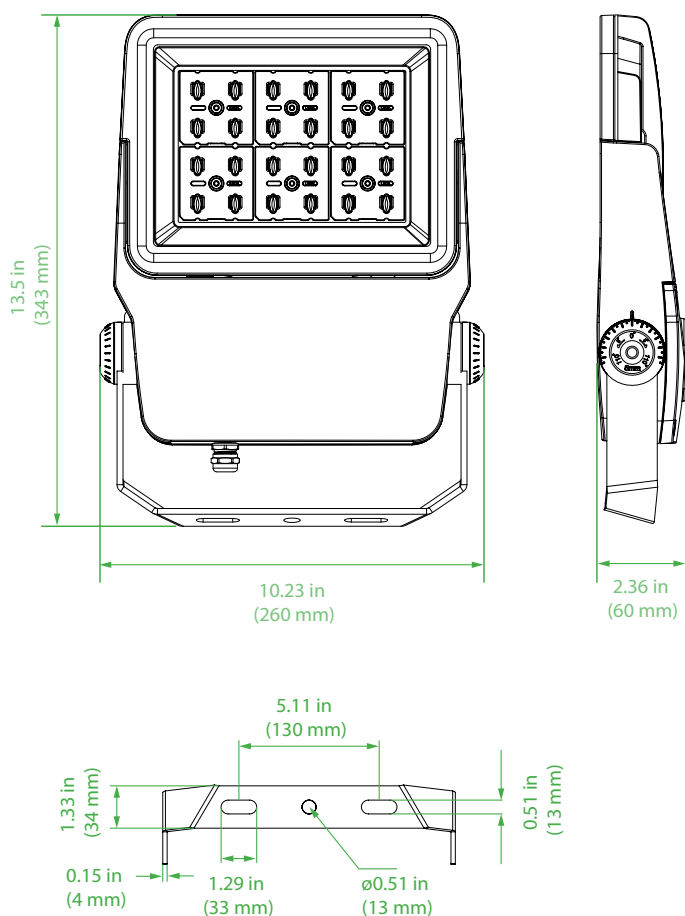
## FLNG Series

Marine LED Floodlight 50Watt 8.000Lumens

*LED flood lights applicable for decks and technical in- and outdoor applications.*



### Dimensions



### Technical Information

<b>Material:</b>	Powder coated anodized seawater resistant aluminium
<b>Finish:</b>	White
<b>Hardware:</b>	Marine grade A4 316 stainless steel
<b>Lens:</b>	90° standard, 30°- and 60° optional
<b>IP Rating:</b>	IP67
<b>Light Source:</b>	50Watt 160Lumens per Watt Natural White 3900K CRI > 85
<b>Power Source:</b>	90-305Vac 50-60Hz (10-30Vdc optional) Meanwell HLG-60H-48B Dimmable driver (0-10Vdc – PWM – resistance) Overload, over-voltage, over-temperature and short circuit protection. Potted driver
<b>Ambient Temperature:</b>	Operating Temperature -40°C ~ +55°C
<b>Cable Entry:</b>	1 x M20 Cable Gland Nickel plated brass
<b>Mounting:</b>	Adjustable A4 316 Stainless Steel bracket 0.15 in (4 mm) thickness
<b>Fixture weight:</b>	7.49 lbs (3,4 kg)

### Compliances

In compliance with rules of maritime classification societies, additional VDE and IEC 60092-306.  
(Equipment luminaires and lighting accessories for use on vessels)

## FLNG Series

Marine LED Floodlight 50Watt 8.000Lumens

### Ordering information

Article No.:	Beam Angle	Light Colour	Voltage	Finish	Specialties
FLNG-050-39WH-03HV	Small beam 30°	3900K Natural White	100-305Vac 50 ~60Hz	White	Supplied with dimmable driver
FLNG-050-39WH-06HV	Medium beam 60°	3900K Natural White	100-305Vac 50 ~60Hz	White	Supplied with dimmable driver
FLNG-050-39WH-09HV (standard)	Wide beam 90°	3900K Natural White	100-305Vac 50 ~60Hz	White	Supplied with dimmable driver
FLNG-050-39WH-03LV	Small beam 30°	3900K Natural White	10-30Vdc	White	
FLNG-050-39WH-06LV	Medium beam 60°	3900K Natural White	10-30Vdc	White	
FLNG-050-39WH-09LV (standard)	Wide beam 90°	3900K Natural White	10-30Vdc	White	

### Special Projects

We may be able to accommodate your special projects, so please don't hesitate to ask about additional options. Minimum order quantities and/or extended lead times will apply. Contact your E-LED Lighting representative with specific inquiries.

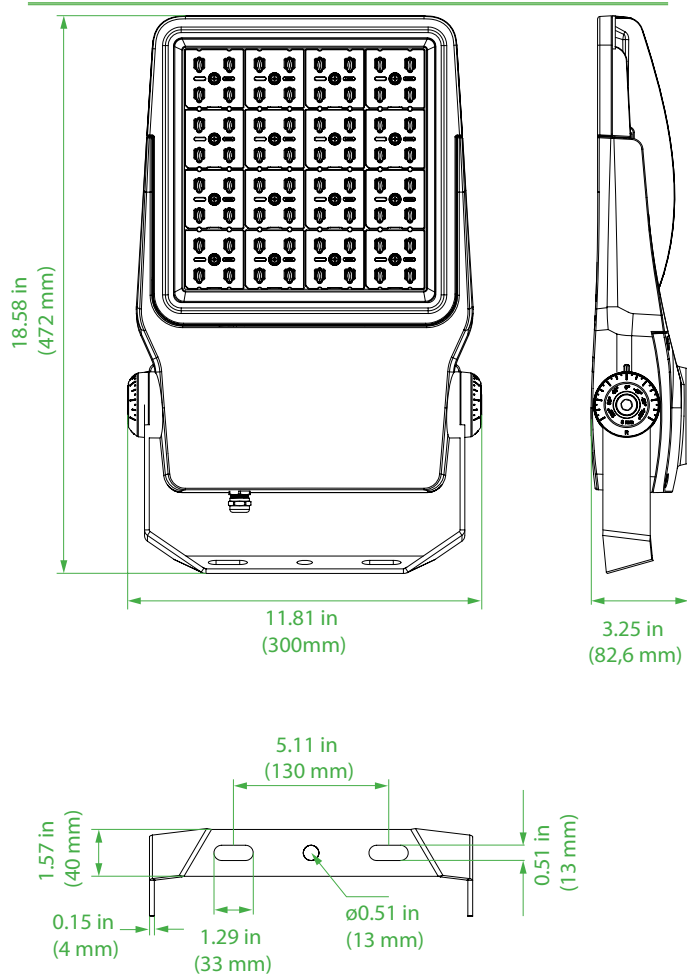
## FLNG Series

Marine LED Floodlight 100Watt 100-305Vac 16.000Lumens

*LED flood lights applicable for decks and technical in- and outdoor applications.*



### Dimensions



### Technical Information

<b>Material:</b>	Powder coated anodized seawater resistant aluminium
<b>Finish:</b>	White
<b>Hardware:</b>	Marine grade A4 316 stainless steel
<b>Lens:</b>	90° standard, 30°- and 60° optional
<b>IP Rating:</b>	IP67
<b>Light Source:</b>	100Watt 160Lumens per Watt Natural White 3900K CRI > 85
<b>Power Source:</b>	Meanwell HLG-120H-C500B 90-305Vac 50~60Hz Dimmable driver (0-10Vdc – PWM – resistance) Overload, over-voltage, over-temperature and short circuit protection. Potted driver
<b>Ambient Temperature:</b>	Operating Temperature -40°C ~ +55°C
<b>Cable Entry:</b>	1 x M20 Cable Gland Nickel plated brass
<b>Mounting:</b>	Adjustable A4 316 Stainless Steel bracket 0.23 in (6 mm) thickness
<b>Fixture weight:</b>	15.21 lbs (6,9 kg)

### Compliances

In compliance with rules of maritime classification societies, additional VDE and IEC 60092-306.  
(Equipment luminaires and lighting accessories for use on vessels)



## FLNG Series

Marine LED Floodlight 100Watt 100-305Vac 16.000Lumens

### Ordering information

Article No.:	Beam Angle	Light Colour	Voltage	Finish	Specialties
FLNG-100-39WH-03HV	Small beam 30°	3900K Natural White	90-305Vac 50 ~60Hz	White	Supplied with dimmable driver
FLNG-100-39WH-06HV	Medium beam 60°	3900K Natural White	90-305Vac 50 ~60Hz	White	Supplied with dimmable driver
FLNG-100-39WH-09HV (standard)	Wide beam 90°	3900K Natural White	90-305Vac 50 ~60Hz	White	Supplied with dimmable driver

### Special Projects

We may be able to accommodate your special projects, so please don't hesitate to ask about additional options. Minimum order quantities and/or extended lead times will apply. Contact your E-LED Lighting representative with specific inquiries.

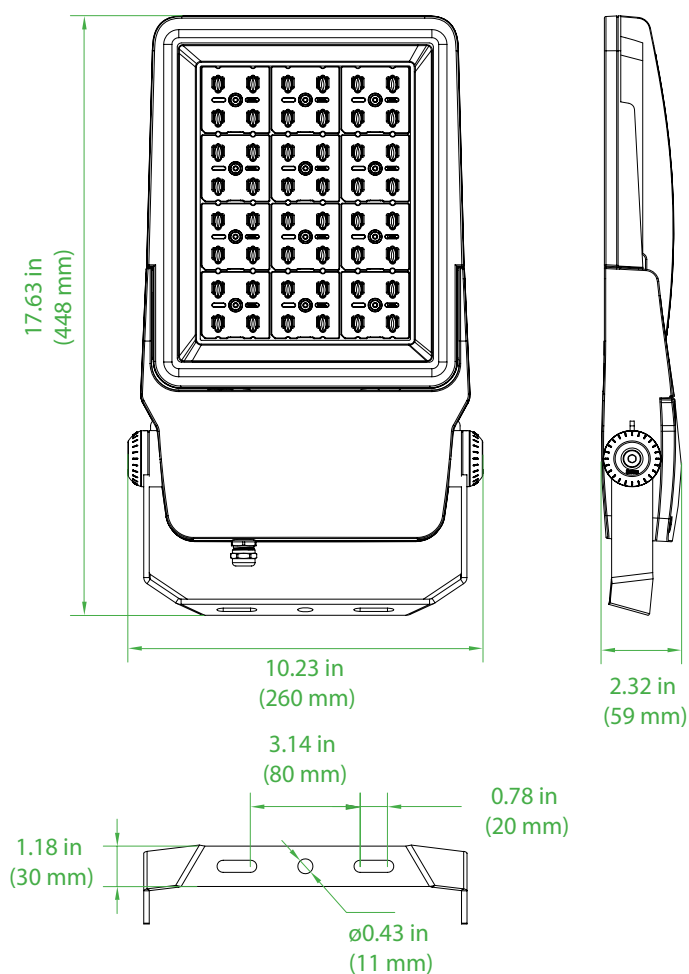
## FLNG Series

Marine LED Floodlight 100Watt 24Vdc 15.000Lumens

*LED flood lights applicable for decks and technical in- and outdoor applications.*



### Dimensions



### Technical Information

<b>Material:</b>	Powder coated anodized seawater resistant aluminium
<b>Finish:</b>	White
<b>Hardware:</b>	Marine grade A4 316 stainless steel
<b>Lens:</b>	90° standard, 30°- and 60° optional
<b>IP Rating:</b>	IP67
<b>Light Source:</b>	100Watt 150Lumens per Watt Natural White 3900K CRI > 85
<b>Power Source:</b>	Epever LS102460LPLI 20-30Vdc Potted driver
<b>Ambient Temperature:</b>	Operating Temperature -40°C ~ +55°C
<b>Cable Entry:</b>	1 x M20 Cable Gland Nickel plated brass
<b>Mounting:</b>	Adjustable A4 316 Stainless Steel bracket 0.23 in (6 mm) thickness
<b>Fixture weight:</b>	9.25 lbs (4,2 kg)

### Compliances

In compliance with rules of maritime classification societies, additional VDE and IEC 60092-306.  
(Equipment luminaires and lighting accessories for use on vessels)

## FLNG Series

Marine LED Floodlight 100Watt 24Vdc 15.000Lumens

### Ordering information

Article No.:	Beam Angle	Light Colour	Voltage	Finish	Specialties
FLNG-100-39WH-03LV	Small beam 30°	3900K Natural White	20-30Vdc	White	
FLNG-100-39WH-06LV	Medium beam 60°	3900K Natural White	20-30Vdc	White	
FLNG-100-39WH-09LV (standard)	Wide beam 90°	3900K Natural White	20-30Vdc	White	

### Special Projects

We may be able to accommodate your special projects, so please don't hesitate to ask about additional options. Minimum order quantities and/or extended lead times will apply. Contact your E-LED Lighting representative with specific inquiries.

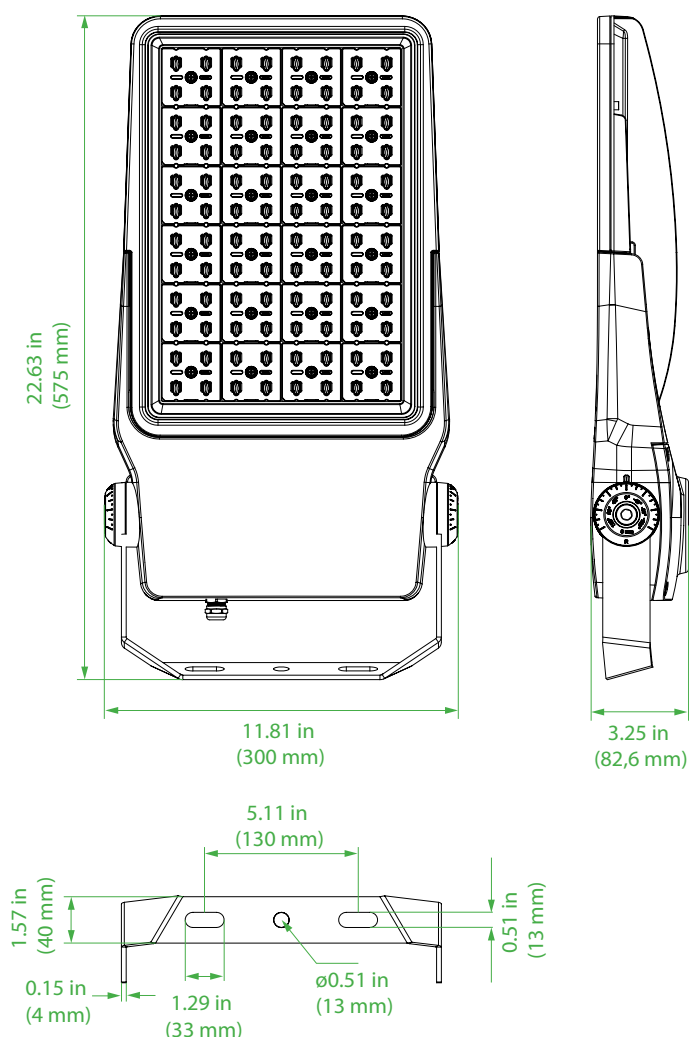
## FLNG Series

Marine LED Floodlight 150Watt 24.000Lumens

*LED flood lights applicable for decks and technical in- and outdoor applications.*



### Dimensions



### Technical Information

<b>Material:</b>	Powder coated anodized seawater resistant aluminium
<b>Finish:</b>	White
<b>Hardware:</b>	Marine grade A4 316 stainless steel
<b>Lens:</b>	90° standard, 30°- and 60° optional
<b>IP Rating:</b>	IP67
<b>Light Source:</b>	150Watt 160Lumens per Watt Natural White 3900K CRI > 85
<b>Power Source:</b>	Meanwell HLG-185H-C1050B 90-305Vac 50~60Hz Dimmable driver (0-10Vdc – PWM – resistance) Overload, over-voltage, over-temperature and short circuit protection. Potted driver
<b>Ambient Temperature:</b>	Operating Temperature -40°C ~ +55°C
<b>Cable Entry:</b>	1 x M20 Cable Gland Nickel plated brass
<b>Mounting:</b>	Adjustable A4 316 Stainless Steel bracket 0.23 in (6 mm) thickness
<b>Fixture weight:</b>	18.29 lbs (8,3 kg)

### Compliances

In compliance with rules of maritime classification societies, additional VDE and IEC 60092-306.  
(Equipment luminaires and lighting accessories for use on vessels)

## FLNG Series

Marine LED Floodlight 150Watt 24.000Lumens

### Ordering information

Article No.:	Beam Angle	Light Colour	Voltage	Finish	Specialties
FLNG-150-39WH-03HV	Small beam 30°	3900K Natural White	90-305Vac 50 ~60Hz	White	Supplied with dimmable driver
FLNG-150-39WH-06HV	Medium beam 60°	3900K Natural White	90-305Vac 50 ~60Hz	White	Supplied with dimmable driver
FLNG-150-39WH-09HV (standard)	Wide beam 90°	3900K Natural White	90-305Vac 50 ~60Hz	White	Supplied with dimmable driver

### Special Projects

We may be able to accommodate your special projects, so please don't hesitate to ask about additional options. Minimum order quantities and/or extended lead times will apply. Contact your E-LED Lighting representative with specific inquiries.

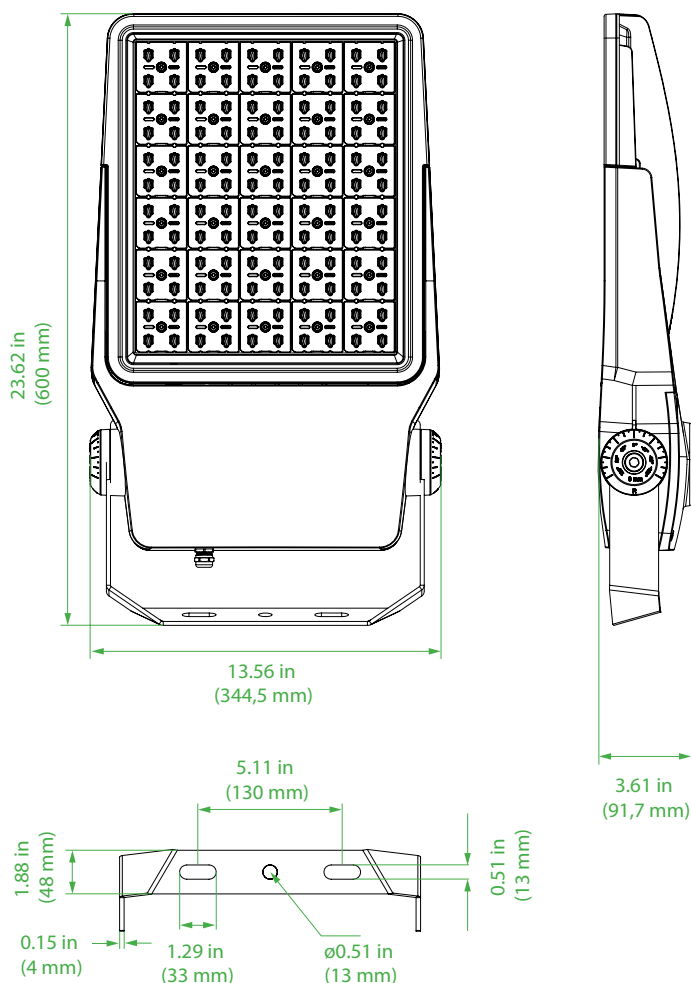
## FLNG Series

Marine LED Floodlight 200Watt 32.000Lumens

*LED flood lights applicable for decks and technical in- and outdoor applications.*



### Dimensions



### Technical Information

<b>Material:</b>	Powder coated anodized seawater resistant aluminium
<b>Finish:</b>	White
<b>Hardware:</b>	Marine grade A4 316 stainless steel
<b>Lens:</b>	60° standard, 30°- and 90° optional
<b>IP Rating:</b>	IP67
<b>Light Source:</b>	200Watt 160Lumens per Watt Natural White 3900K CRI > 85
<b>Power Source:</b>	Meanwell HLG-240H-C1050B 90-305Vac 50~60Hz Dimmable driver (0-10Vdc – PWM – resistance) Overload, over-voltage, over-temperature and short circuit protection. Potted driver
<b>Ambient Temperature:</b>	Operating Temperature -40°C ~ +55°C
<b>Cable Entry:</b>	1 x M20 Cable Gland Nickel plated brass
<b>Mounting:</b>	Adjustable A4 316 Stainless Steel bracket 0.23 in (6 mm) thickness
<b>Fixture weight:</b>	24.25 lbs (11 kg)

### Compliances

In compliance with rules of maritime classification societies, additional VDE and IEC 60092-306.  
(Equipment luminaires and lighting accessories for use on vessels)



## FLNG Series

Marine LED Floodlight 200Watt 32.000Lumens

### Ordering information

Article No.:	Beam Angle	Light Colour	Voltage	Finish	Specialties
FLNG-200-39WH-03HV	Small beam 30°	3900K Natural White	90-305Vac 50 ~60Hz	White	Supplied with dimmable driver
FLNG-200-39WH-06HV (standard)	Medium beam 60°	3900K Natural White	90-305Vac 50 ~60Hz	White	Supplied with dimmable driver
FLNG-200-39WH-09HV	Wide beam 90°	3900K Natural White	90-305Vac 50 ~60Hz	White	Supplied with dimmable driver

### Special Projects

We may be able to accommodate your special projects, so please don't hesitate to ask about additional options. Minimum order quantities and/or extended lead times will apply. Contact your E-LED Lighting representative with specific inquiries.

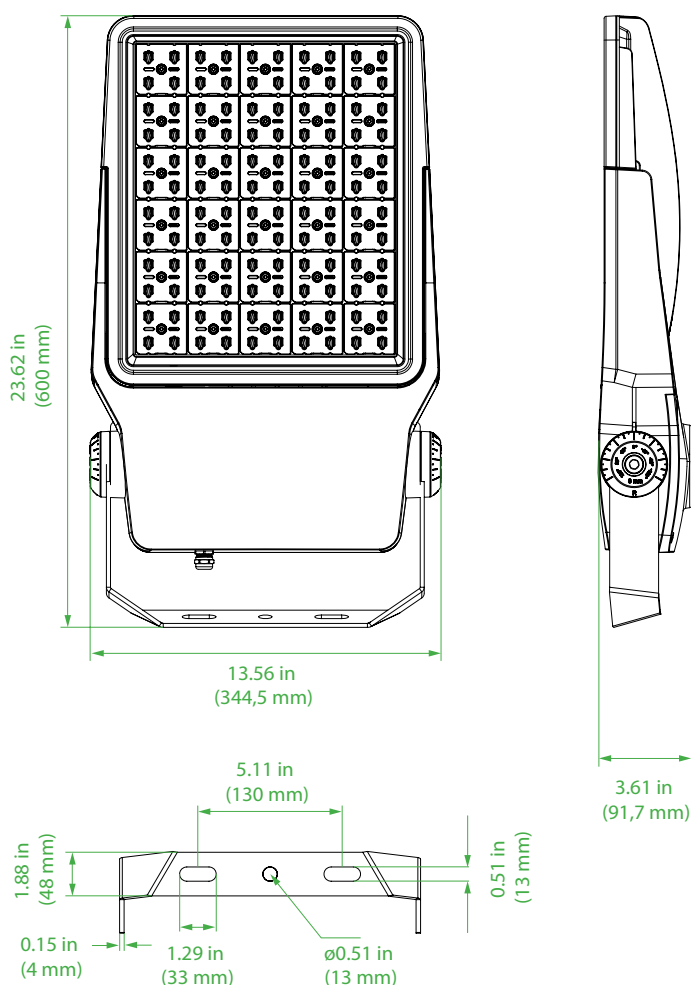
## FLNG Series

Marine LED Floodlight 300Watt 48.000Lumens

*LED flood lights applicable for decks and technical in- and outdoor applications.*



### Dimensions



### Technical Information

<b>Material:</b>	Powder coated anodized seawater resistant aluminium
<b>Finish:</b>	White
<b>Hardware:</b>	Marine grade A4 316 stainless steel
<b>Lens:</b>	60° standard, 30°- and 90° optional
<b>IP Rating:</b>	IP67
<b>Light Source:</b>	300Watt 160Lumens per Watt Natural White 3900K CRI > 85
<b>Power Source:</b>	Meanwell HLG-320H-C1050B 90-305Vac 50-60Hz Dimmable driver (0-10Vdc – PWM – resistance) Overload, over-voltage, over-temperature and short circuit protection. Potted driver
<b>Ambient Temperature:</b>	Operating Temperature -40°C ~ +55°C
<b>Cable Entry:</b>	1 x M20 Cable Gland Nickel plated brass
<b>Mounting:</b>	Adjustable A4 316 Stainless Steel bracket 0.23 in (6 mm) thickness
<b>Fixture weight:</b>	25.46 lbs (11,55 kg)

### Compliances

In compliance with rules of maritime classification societies, additional VDE and IEC 60092-306.  
(Equipment luminaires and lighting accessories for use on vessels)

## FLNG Series

Marine LED Floodlight 300Watt 48.000Lumens

### Ordering information

Article No.:	Beam Angle	Light Colour	Voltage	Finish	Specialties
FLNG-300-39WH-03HV	Small Beam 30°	3900K Natural White	100-305Vac 50~60Hz	White	Standard supplied with dimmable driver
FLNG-300-39WH-06HV (standard)	Medium Beam 60°	3900K Natural White	100-305Vac 50~60Hz	White	Standard supplied with dimmable driver
FLNG-300-39WH-09HV	Wide Beam 90°	3900K Natural White	100-305Vac 50~60Hz	White	Standard supplied with dimmable driver

### Special Projects

We may be able to accommodate your special projects, so please don't hesitate to ask about additional options. Minimum order quantities and/or extended lead times will apply. Contact your E-LED Lighting representative with specific inquiries.

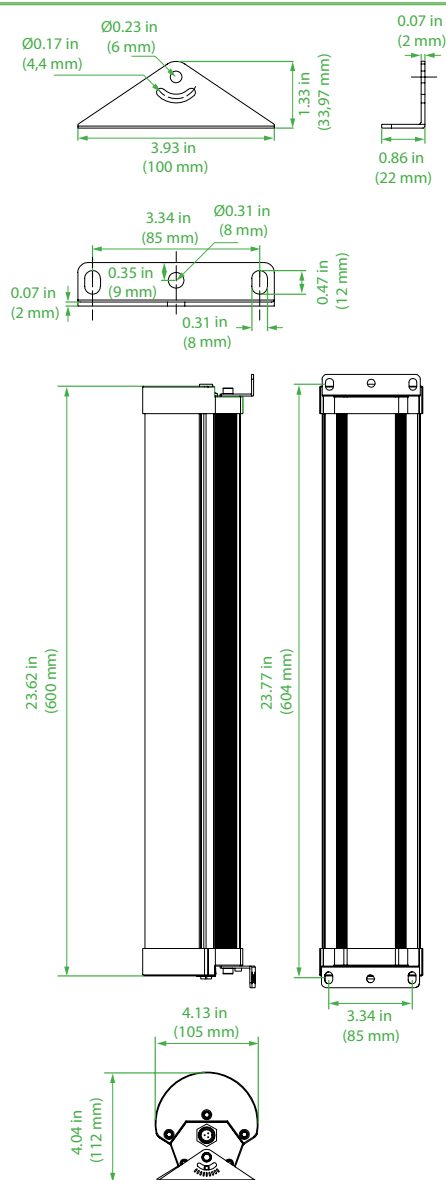
## RTPL Series

## Robust LED Tri-Proof Light 30Watt 3.900Lumens

*Robust LED Tri-Proof Light applicable for a wide range of interior- and exterior applications such as engine rooms, technical areas, workshops, stores, passage way, decks, etc. Available with emergency circuits on request.*



## Dimensions



## Technical Information

<b>Material:</b>	Anodized seawater resistant aluminium and polycarbonate cover
<b>Hardware:</b>	Marine grade A4 316 stainless steel
<b>Lens:</b>	230°
<b>IP Rating:</b>	IP66
<b>Light Source:</b>	30Watt
	130Lumens per Watt
	Natural White 3900K
	CRI > 85
<b>Power Source:</b>	90-305Vac 50-60Hz (10-30Vdc, 20-30Vdc emergency circuit optional & 3 hours battery powered emergency circuit optional)
	Meanwell LPF-40-48
	Overload, over-voltage, over-temperature and short circuit protection.
	Potted driver
<b>Ambient Temperature:</b>	Operating temperature -40°C ~ +55°
<b>Cable Entry:</b>	2 x M20 fast connecting glands with internal 3-pole terminal block
	Max. 4pcs fast connecting glands can be installed) *1
<b>Mounting:</b>	Adjustable A4 316 Stainless Steel brackets
	(optional A4 316 Stainless Steel moveable re-fit brackets available *2)
<b>Fixture weight:</b>	5.95 lbs (2,7kg)

## Compliances

ETL certified

In compliance with rules of maritime classification societies, additional VDE and IEC 60092-306. (Equipment luminaires and lighting accessories for use on vessels)

## RTPL Series

Robust LED Tri-Proof Light 30Watt 3.900Lumens

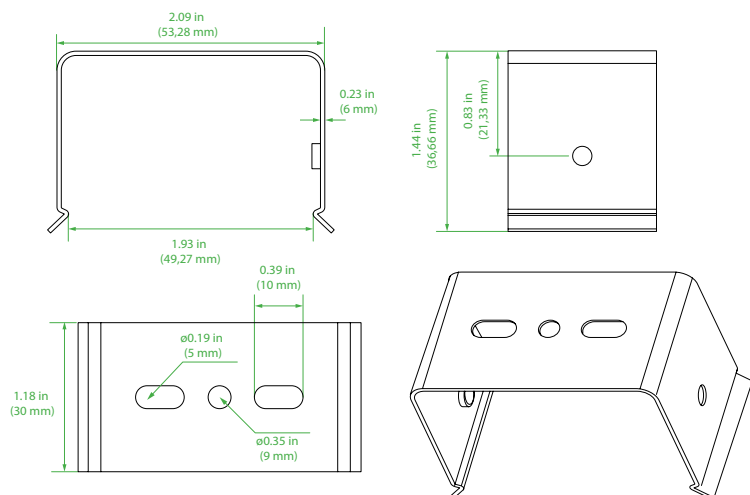
### Ordering information

Article No.:	Beam Angle	Light Colour	Voltage	Finish	Specialties
RTPL-30W-39-60-HV	Wide beam 230°	3900K Natural White	100-305Vac 50~60Hz	Transparent white + Black	Standard supplied with 2pcs fast connecting glands.
RTPL-30W-39-60-HV+BE	230°	3900K Natural White	100-305Vac 50-60Hz	Transparent white + black	Standard supplied with 3pcs fast connecting glands and 3H battery powered EMG
RTPL-30W-39-60-HV+E	Wide beam 230°	3900K Natural White	100-305Vac 50~60Hz + 20-30Vdc	Transparent white + Black	Standard supplied with 3pcs fast connecting glands and 20-30Vdc powered EMG
RTPL-30W-39-60-LV	Wide beam 230°	3900K Natural White	10-30Vdc	Transparent white + Black	Standard supplied with 2pcs fast connecting glands

\*1: Fast connecting glands with 3-pole terminal block:

The use of the fast connecting gland allows wiring the light without opening the fixture. The fixtures will be standard supplied with 2 x M20 fast connecting glands installed one on each end. Optional 2 x M20 fast connecting glands available on both ends.

\*2: A4316 Stainless Steel moveable re-fit brackets.



### Special Projects

We may be able to accommodate your special projects, so please don't hesitate to ask about additional options. Minimum order quantities and/or extended lead times will apply. Contact your E-LED Lighting representative with specific inquiries.

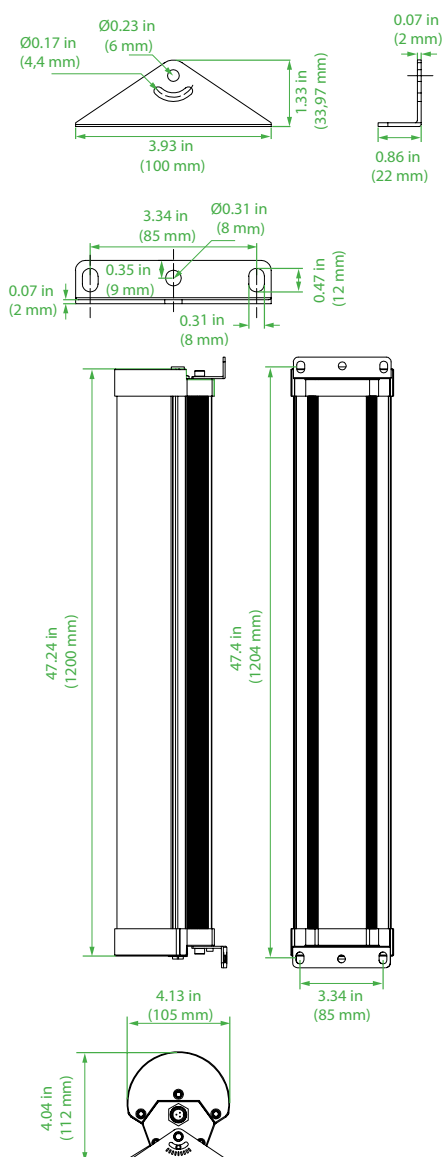
## RTPL Series

Robust LED Tri-Proof Light 60Watt 7.800Lumens

*Robust LED Tri-Proof Light applicable for a wide range of interior- and exterior applications such as engine rooms, technical areas, work-shops, stores, passage way, decks, etc. Available with 5Watt 20-30Vdc emergency circuit.*



### Dimensions



### Technical Information

<b>Material:</b>	Anodized seawater resistant aluminium and polycarbonate cover
<b>Hardware:</b>	Marine grade A4 316 stainless steel
<b>Lens:</b>	230°
<b>IP Rating:</b>	IP66
<b>Light Source:</b>	60Watt 130Lumens per Watt Natural White 3900K CRI > 85
<b>Power Source:</b>	90-305Vac 50-60Hz (10-30Vdc, 20-30Vdc emergency circuit optional & 3 hours battery powered emergency circuit optional) Meanwell LPF-60-42 Overload, over-voltage, over-temperature and short circuit protection. Potted driver
<b>Ambient Temperature:</b>	Operating temperature -40°C ~ +55°
<b>Cable Entry:</b>	2 x M20 fast connecting glands with internal 3-pole terminal block (Max. 4pcs fast connecting glands can be installed) *1
<b>Mounting:</b>	Adjustable A4 316 Stainless Steel brackets (optional A4 316 Stainless Steel moveable re-fit brackets available *2)
<b>Fixture weight:</b>	8.81 lbs (4 kg)

### Compliances

ETL certified

In compliance with rules of maritime classification societies, additional VDE and IEC 60092-306. (Equipment luminaires and lighting accessories for use on vessels)



## RTPL Series

Robust LED Tri-Proof Light 60Watt 7.800Lumens

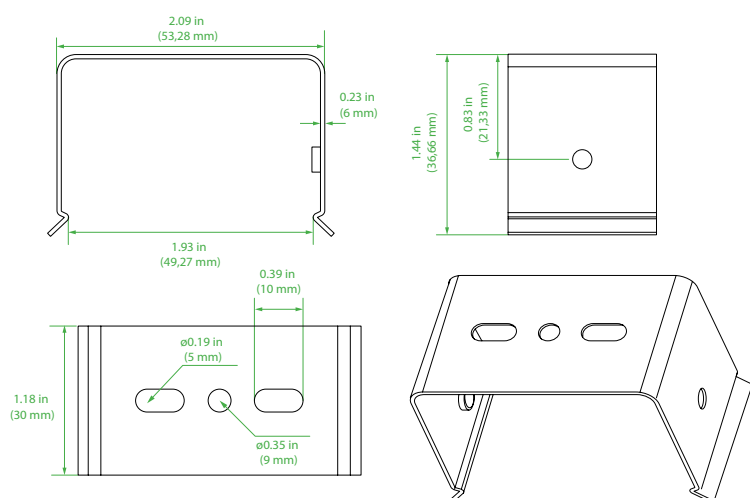
### Ordering information

Article No.:	Beam Angle	Light Colour	Voltage	Finish	Specialties
RTPL-60W-39-120-HV	Wide beam 230°	3900K Natural White	100-305Vac 50~60Hz	Transparent white + Black	Standard supplied with 2pcs fast connecting glands.
RTPL-60W-120-60-HV+BE	230°	3900K Natural White	100-305Vac 50-60Hz	Transparent white + Black	Standard supplied with 3pcs fast connecting glands and 3H battery powered EMG
RTPL-60W-39-120-HV+E	Wide beam 230°	3900K Natural White	100-305Vac 50~60Hz + 20-30Vdc	Transparent white + Black	Standard supplied with 3pcs fast connecting glands and 20-30Vdc powered EMG

\*1: Fast connecting glands with 3-pole terminal block:

The use of the fast connecting gland allows wiring the light without opening the fixture. The fixtures will be standard supplied with 2 x M20 fast connecting glands installed one on each end. Optional 2 x M20 fast connecting glands available on both ends.

\*2: A4316 Stainless Steel moveable re-fit brackets.



### Special Projects

We may be able to accommodate your special projects, so please don't hesitate to ask about additional options. Minimum order quantities and/or extended lead times will apply. Contact your E-LED Lighting representative with specific inquiries.

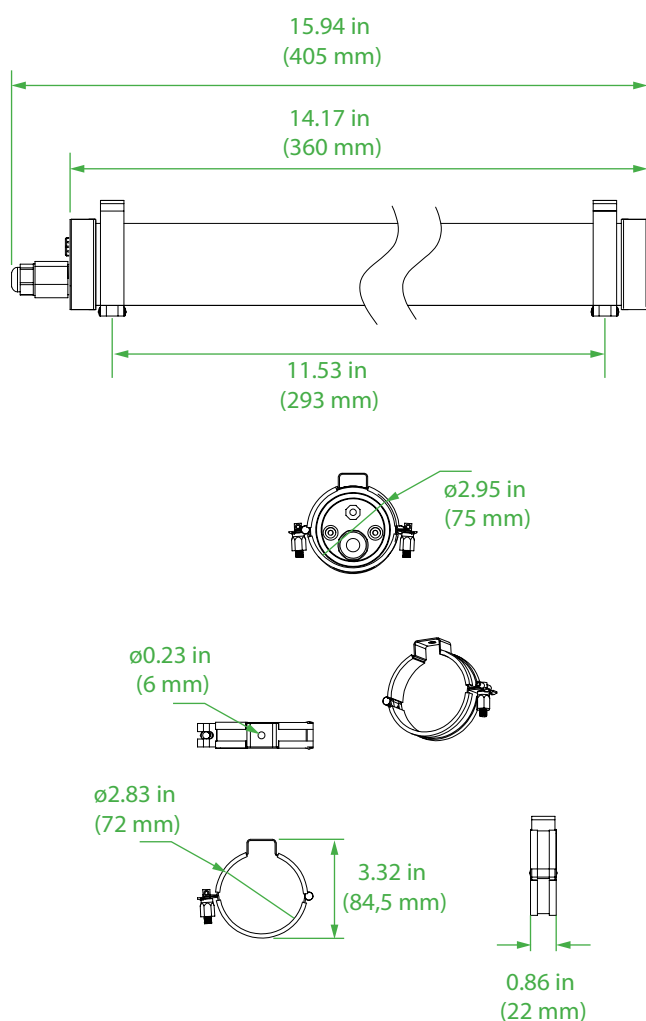
## LTPT Series

LED Tube Tri-Proof Light 10Watt 1.500Lumens

LED Tube Tri-Proof Light fixtures for exterior applications such as decks and deck rails. Due the water tightness the LTPT series can be installed on the roughest areas on deck.



### Dimensions



Installation brackets can be installed on side caps- or on the polycarbonate cover

### Technical Information

<b>Material:</b>	A4 316 stainless steel end caps and polycarbonate cover
<b>Hardware:</b>	Marine grade A4 316 stainless steel
<b>Lens:</b>	180°
<b>IP Rating:</b>	IP69K
<b>Light Source:</b>	10Watt 150Lumens per Watt Natural White 3900K CRI > 85
<b>Power Source:</b>	100-277Vac 50~60Hz Boke BK-BHL022-0600AM Overload, over-voltage, over-temperature and short circuit protection. Potted driver
<b>Ambient Temperature:</b>	Operating temperature -40°C ~ +55°
<b>Cable Entry:</b>	2 x M20 fast connecting glands with internal 3-pole terminal block - *1
<b>Mounting:</b>	Movable A4 316 Stainless Steel brackets
<b>Fixture weight:</b>	1.98 lbs (0,9 kg)

### Compliances

In compliance with rules of maritime classification societies, additional VDE and IEC 60092-306.  
(Equipment luminaires and lighting accessories for use on vessels)

## LTPT Series

LED Tube Tri-Proof Light 10Watt 1.500Lumens

### Ordering information

Article No.:	Beam Angle	Light Colour	Voltage	Finish	Specialties
LTPT-10W-39-29-HV	Wide beam 180°	3900K Natural White	100-277Vac 50~60Hz	Transparent White	Standard supplied with 2pcs fast connecting glands.

\*1: Fast connecting glands with 3-pole terminal block:

The use of the fast connecting gland allows wiring the light without opening the fixture.

### Special Projects

We may be able to accommodate your special projects, so please don't hesitate to ask about additional options. Minimum order quantities and/or extended lead times will apply. Contact your E-LED Lighting representative with specific inquiries.

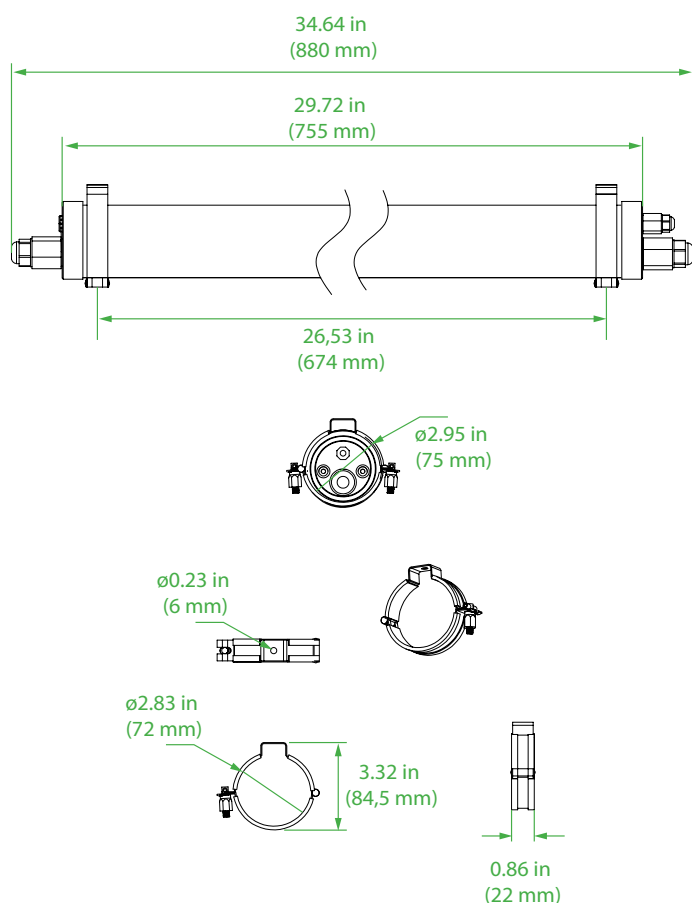
## LTPT Series

LED Tube Tri-Proof Light 20Watt 3.000Lumens

LED Tube Tri-Proof Light fixtures for exterior applications such as decks and deck rails. Due the water tightness the LTPT series can be installed on the roughest areas on deck. Standard supplied with 2 x M25 fast connecting glands on both ends for connection in series. Available with 5Watt 20-30Vdc emergency circuit.



### Dimensions



Installation brackets can be installed on side caps- or on the polycarbonate cover

### Technical Information

<b>Material:</b>	A4 316 stainless steel end caps and polycarbonate cover
<b>Hardware:</b>	Marine grade A4 316 stainless steel
<b>Lens:</b>	180°
<b>IP Rating:</b>	IP69K
<b>Light Source:</b>	20Watt 150Lumens per Watt Natural White 3900K (Blue-, Green or Red available on request) CRI > 85
<b>Power Source:</b>	100-277Vac 50~60Hz (20-30Vdc emergency circuit optional or 3 hours battery powered emergency circuit optional) Boke BK-BHL042-1100AM Overload, over-voltage, over-temperature and short circuit protection. Potted driver
<b>Ambient Temperature:</b>	Operating temperature -40°C ~+55°
<b>Cable Entry:</b>	2 x M25 fast connecting glands with internal 5-pole terminal block - *1
<b>Mounting:</b>	Movable A4 316 Stainless Steel brackets
<b>Fixture weight:</b>	3.74 lbs (1,7 kg)

### Compliances

In compliance with rules of maritime classification societies, additional VDE and IEC 60092-306.  
(Equipment luminaires and lighting accessories for use on vessels)

## LTPT Series

LED Tube Tri-Proof Light 20Watt 3.000Lumens

### Ordering information

Article No.:	Beam Angle	Light Colour	Voltage	Finish	Specialties
LTPT-20W-39-77-HV	Wide beam 180°	3900K Natural White	100-277Vac 50~60Hz	Transparent White	Standard supplied with 2pcs fast connecting glands
LTPT-20W-39-77-HV+BE	Wide beam 180°	3900K Natural White	100-277Vac 50~60Hz	Transparent White	Standard supplied with 3pcs fast connecting glands and 3H battery powered EMG
LTPT-20W-39-77-HV+E	Wide beam 180°	3900K Natural White	100-277Vac 50~60Hz	Transparent White	Standard supplied with 3pcs fast connecting glands and 20-30Vdc powered EMG
LTPT-20W-BLUE-77-HV	Wide beam 180°	Blue	100-277Vac 50~60Hz	Transparent White	Standard supplied with 2pcs fast connecting glands
LTPT-20W-RED-77-HV	Wide beam 180°	Red	100-277Vac 50~60Hz	Transparent White	Standard supplied with 2pcs fast connecting glands

\*1: Fast connecting glands with 5-pole terminal block:

The use of the fast connecting gland allows wiring the light without opening the fixture. The fixtures will be standard supplied with 2 x M25 fast connecting glands installed one on each end.

### Special Projects

We may be able to accommodate your special projects, so please don't hesitate to ask about additional options. Minimum order quantities and/or extended lead times will apply. Contact your E-LED Lighting representative with specific inquiries.

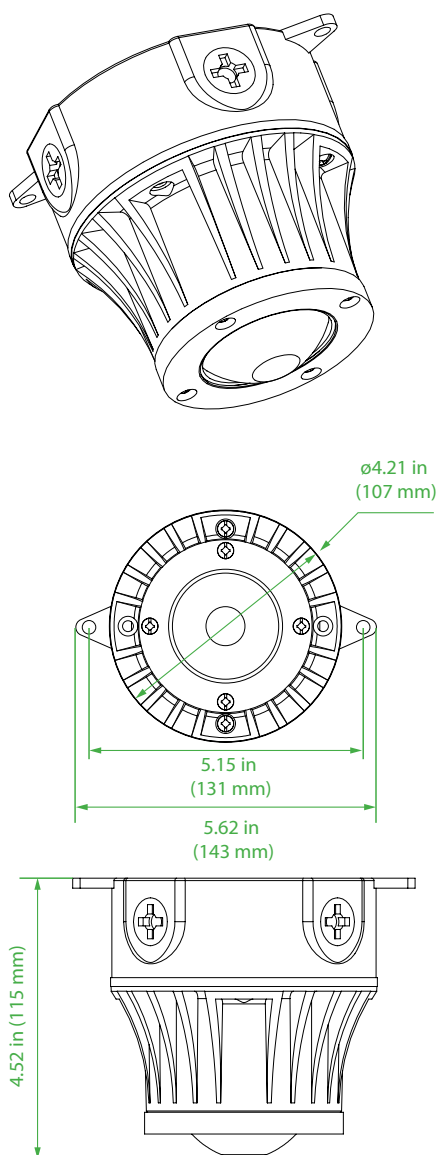
## LBY Series

LED Bulleye Lamp Base Mount 12Watt 1.200Lumens

*LED Bulleye lamp applicable for decks and technical in- and outdoor applications. Standard supplied with isolating pad.*



### Dimensions



### Technical Information

<b>Material:</b>	Powder coated anodized seawater resistant aluminium
<b>Finish:</b>	White
<b>Lens:</b>	180°
<b>IP Rating:</b>	IP67
<b>Light Source:</b>	12Watt
	100Lumens per Watt
	Natural White 3900K
	CRI > 85
<b>Power Source:</b>	85-265Vac 50 ~60Hz
	Overload, over-voltage, over-temperature and short circuit protection.
	Potted driver
<b>Ambient Temperature:</b>	Operating temperature -40°C ~ +55°
<b>Cable Entry:</b>	5 x M20 Cable Gland Polyamide (PA)
<b>Mounting:</b>	Screw Mount
<b>Fixture weight:</b>	1.43 lbs (0,65 kg)

### Compliances

In compliance with rules of maritime classification societies, additional VDE and IEC 60092-306.  
(Equipment luminaires and lighting accessories for use on vessels)



## LBY Series

LED Bulleye Lamp Base Mount 12Watt 1.200Lumens

### Ordering information

Article No.:	Beam Angle	Light Colour	Voltage	Finish	Specialties
LBYB-12-39WH-HV	Wide beam 180°	3900K Natural White	85-265Vac 50~60Hz	White	Base Mount installation

### Special Projects

We may be able to accommodate your special projects, so please don't hesitate to ask about additional options. Minimum order quantities and/or extended lead times will apply. Contact your E-LED Lighting representative with specific inquiries.

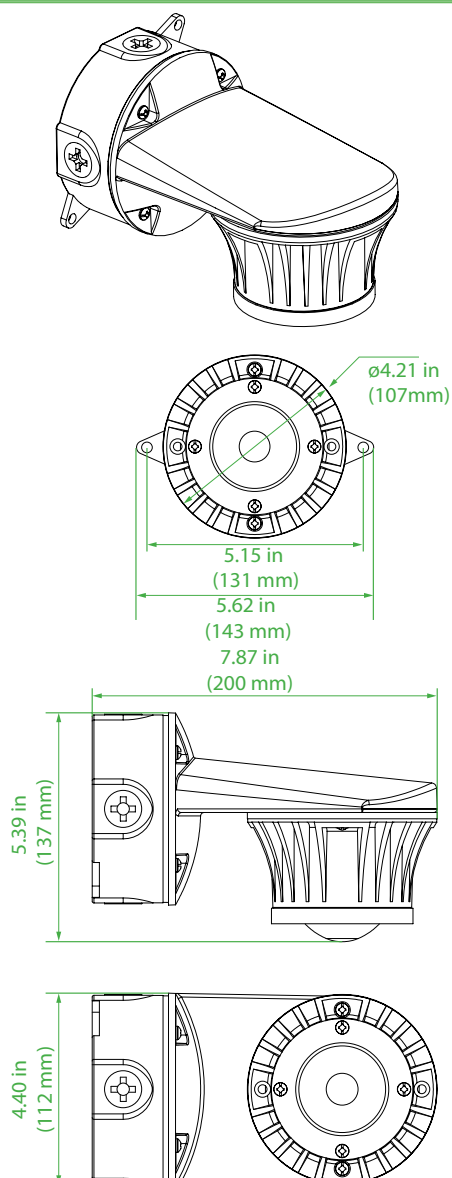
## LBY Series

LED Bulleye Lamp Base Mount 12Watt 1.200Lumens

*LED Bulleye lamp applicable for decks and technical in- and outdoor applications. Standard supplied with isolating pad.*



### Dimensions



### Technical Information

<b>Material:</b>	Powder coated anodized seawater resistant aluminium
<b>Finish:</b>	White
<b>Lens:</b>	180°
<b>IP Rating:</b>	IP67
<b>Light Source:</b>	12Watt 100Lumens per Watt Natural White 3900K CRI > 85
<b>Power Source:</b>	85-265Vac 50 ~60Hz Overload, over-voltage, over-temperature and short circuit protection. Potted driver
<b>Ambient Temperature:</b>	Operating temperature -40°C ~ +55°
<b>Cable Entry:</b>	5 x M20 Cable Gland Polyamide (PA)
<b>Mounting:</b>	Screw Mount
<b>Fixture weight:</b>	1.43 lbs (0,65 kg)

### Compliances

In compliance with rules of maritime classification societies, additional VDE and IEC 60092-306.  
(Equipment luminaires and lighting accessories for use on vessels)

## LBY Series

LED Bulleye Lamp Base Mount 12Watt 1.200Lumens

### Ordering information

Article No.:	Beam Angle	Light Colour	Voltage	Finish	Specialties
LBYS-12-39WH-HV	Wide beam 180°	3900K Natural White	85-265Vac 50~60Hz	White	Side Mount installation

### Special Projects

We may be able to accommodate your special projects, so please don't hesitate to ask about additional options. Minimum order quantities and/or extended lead times will apply. Contact your E-LED Lighting representative with specific inquiries.

## FLEX Series

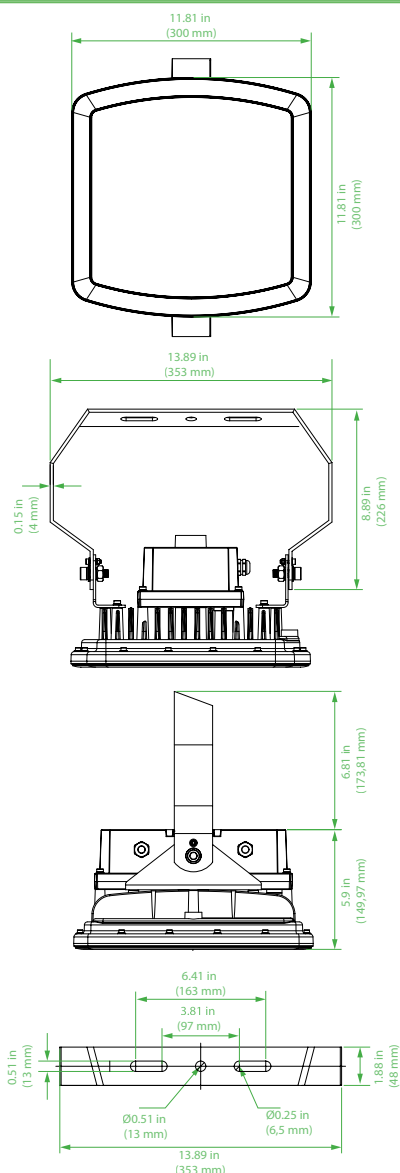
Explosion Proof Marine LED Flood Light 80Watt 10.400Lumens

*Explosion proof LED flood lights applicable for decks and technical in- and outdoor applications.*

**EX Atex certified, IECEx certified  
and UL844 & UL1598 A listed**



### Dimensions



### Technical Information

<b>Material:</b>	Powder coated anodized seawater resistant aluminium
<b>Finish:</b>	White
<b>Hardware:</b>	Marine grade A4 316 stainless steel
<b>Lens:</b>	100°
<b>IK Rating:</b>	IK10
<b>IP Rating:</b>	IP66
<b>Light Source:</b>	80Watt 130Lumens per Watt Natural White 3900K CRI > 85
<b>Power Source:</b>	100-305Vac 50~60Hz Meanwell HLG-80H-42 Overload, over-voltage, over-temperature and short circuit protection. Potted driver
<b>Ambient Temperature:</b>	Operating Temperature -40°C ~ +55°
<b>Cable Entry:</b>	1 x M25 Cable Gland A4 316 stainless steel Ex. Atex certified
<b>Mounting:</b>	Adjustable A4 316 Stainless Steel bracket 0.19 in (5 mm) thickness
<b>Fixture weight:</b>	20.94 lbs (9,5 kg)

### Compliances

ATEX certified, IECEx certified, UL844 Listed, UL1598A listed  
In compliance with rules of maritime classification societies,  
additional VDE and IEC 60092-306.  
(Equipment luminaires and lighting accessories for use on vessels)

## FLEX Series

Explosion Proof Marine LED Flood Light 80Watt 10.400Lumens

### Ordering information

Article No.:	Beam Angle	Light Colour	Voltage	Finish	Specialties
FLEX-080-39WH-HV	Wide beam 100°	3900K Natural White	100-305Vac 50 ~60Hz	White	

### Special Projects

We may be able to accommodate your special projects, so please don't hesitate to ask about additional options. Minimum order quantities and/or extended lead times will apply. Contact your E-LED Lighting representative with specific inquiries.

## FLEX Series

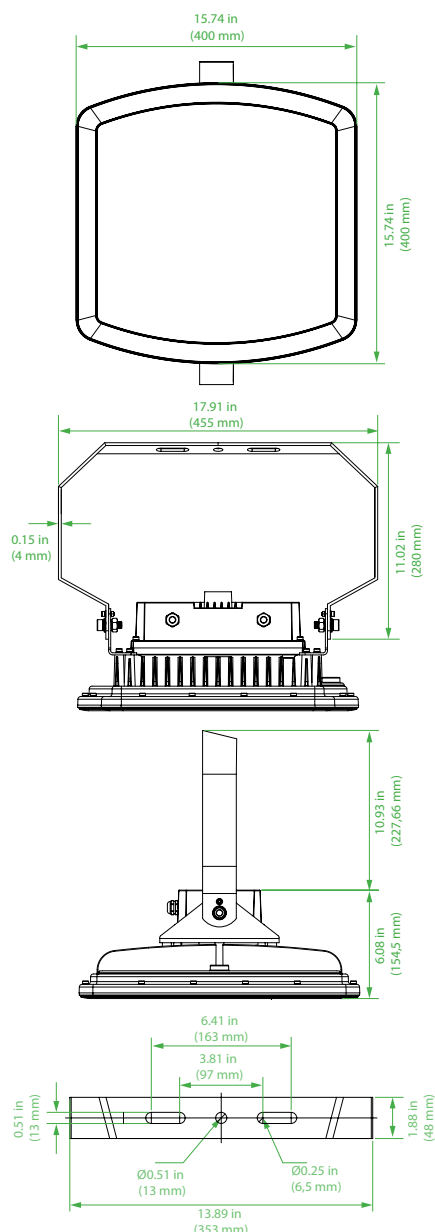
Explosion Proof Marine LED Flood Light 120Watt 15.600Lumens

*Explosion proof LED flood lights applicable for decks and technical in- and out-door applications..*

*EX Atex certified, IECEx certified and UL844 & UL1598 A listed*



### Dimensions



### Technical Information

<b>Material:</b>	Powder coated anodized seawater resistant aluminium
<b>Finish:</b>	White
<b>Hardware:</b>	Marine grade A4 316 stainless steel
<b>Lens:</b>	100°
<b>IK Rating:</b>	IK10
<b>IP Rating:</b>	IP67
<b>Light Source:</b>	120Watt 130Lumens per Watt Natural White 3900K CRI > 85
<b>Power Source:</b>	100-305Vac 50~60Hz Meanwell HLG-80H-42 Overload, over-voltage, over-temperature and short circuit protection. Potted driver
<b>Ambient Temperature:</b>	Operating Temperature -40°C ~ +55°
<b>Cable Entry:</b>	1 x M25 Cable Gland A4 316 stainless steel Ex. Atex certified
<b>Mounting:</b>	Adjustable A4 316 Stainless Steel bracket 0.19 in (5 mm) thickness
<b>Fixture weight:</b>	28.88 lbs (13,1 kg)

### Compliances

ATEX certified, IECEx certified, UL844 Listed, UL1598A listed  
In compliance with rules of maritime classification societies,  
additional VDE and IEC 60092-306.  
(Equipment luminaires and lighting accessories for use on vessels)

## FLEX Series

Explosion Proof Marine LED Flood Light 120Watt  
15.600Lumens

### Ordering information

Article No.:	Beam Angle	Light Colour	Voltage	Finish	Specialties
FLEX-120-39WH-HV	Wide beam 100°	3900K Natural White	100-305Vac 50 ~60Hz	White	

### Special Projects

We may be able to accommodate your special projects, so please don't hesitate to ask about additional options. Minimum order quantities and/or extended lead times will apply. Contact your E-LED Lighting representative with specific inquiries.



## FLEX Series

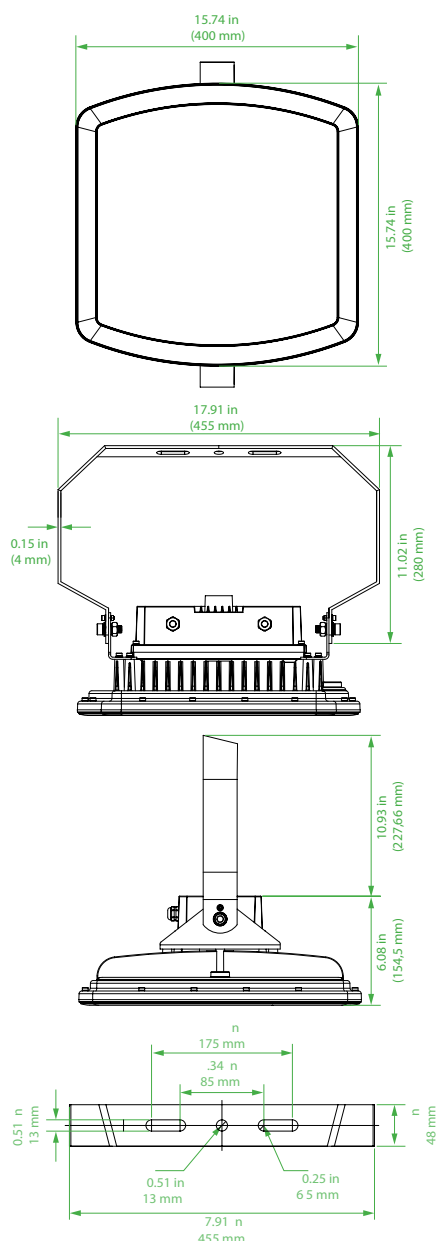
Explosion Proof Marine LED Flood Light 200Watt 26.000Lumens

*Explosion proof LED flood lights applicable for decks and technical in- and outdoor applications.*

*EX Atex certified, IECEx certified and UL844 & UL1598 A listed*



### Dimensions



### Technical Information

<b>Material:</b>	Powder coated anodized seawater resistant aluminium
<b>Finish:</b>	White
<b>Hardware:</b>	Marine grade A4 316 stainless steel
<b>Lens:</b>	100°
<b>IK Rating:</b>	IK10
<b>IP Rating:</b>	IP67
<b>Light Source:</b>	200Watt 130Lumens per Watt Natural White 3900K CRI > 85
<b>Power Source:</b>	100-305Vac 50~60Hz Meanwell XLG-240-H Overload, over-voltage, over-temperature and short circuit protection. Potted driver
<b>Ambient Operating Temperature:</b>	-40°C ~ +55°
<b>Cable Entry:</b>	1 x M25 Cable Gland A4 316 stainless steel Ex. Atex certified
<b>Mounting:</b>	Adjustable A4 316 Stainless Steel bracket 0.19 in (5 mm) thickness
<b>Fixture weight:</b>	29,32 lbs (13,3 kg)

### Compliances

ATEX certified, IECEx certified, UL844 Listed, UL1598A listed  
In compliance with rules of maritime classification societies, additional VDE and IEC 60092-306.  
(Equipment luminaires and lighting accessories for use on vessels)

## FLEX Series

Explosion Proof Marine LED Flood Light 200Watt  
26.000Lumens

### Ordering information

Article No.:	Beam Angle	Light Colour	Voltage	Finish	Specialties
FLEX-200-39WH-HV	Wide beam 100°	3900K Natural White	100-305Vac 50 ~60Hz	White	

### Special Projects

We may be able to accommodate your special projects, so please don't hesitate to ask about additional options. Minimum order quantities and/or extended lead times will apply. Contact your E-LED Lighting representative with specific inquiries.

## EXTPL Series

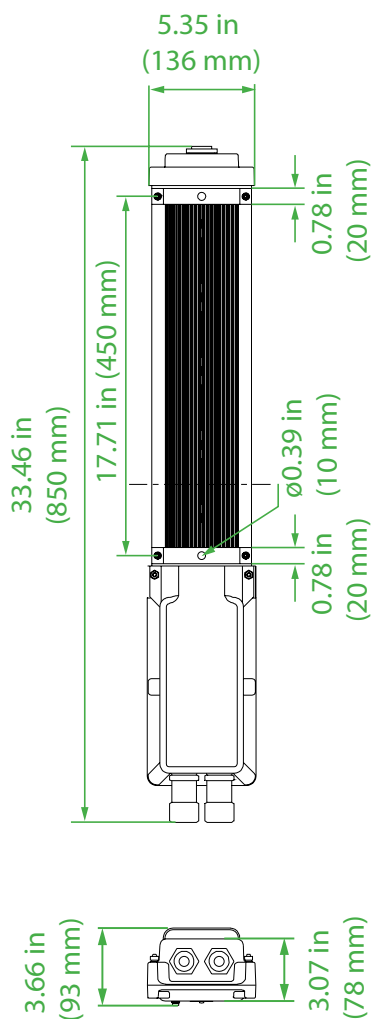
Ex. Atex LED Robust Tri-Proof Light 30Watt 3.000Lumens

Ex. Atex certified LED Tri-Proof lights for replacing TL fluorescent fixtures for various interior- and exterior applications such as stores, technical areas, decks etc. Standard supplied with 5Watt 24Vdc wired emergency circuit.

Ex ATEX certification



### Dimensions



### Technical Information

<b>Material:</b>	Powder coated anodized seawater resistant aluminium
<b>Finish:</b>	Black
<b>Hardware:</b>	Marine grade A4 316 stainless steel
<b>Lens:</b>	180°
<b>IP Rating:</b>	IP66
<b>Light Source:</b>	30Watt 100Lumens per Watt Natural White 3900K CRI > 85
<b>Power Source:</b>	100-305Vac 50~60Hz Sosen Electronics SS-35H-42 Overload, over-voltage, over-temperature and short circuit protection. Potted driver
<b>Ambient Temperature:</b>	Operating Temperature -40°C ~ +55°
<b>Cable Entry:</b>	2 x M25 Cable Gland A4 316 stainless steel Ex. Atex certified
<b>Mounting:</b>	A4 316 Stainless Steel bracket
<b>Fixture weight:</b>	10.36 lbs (4,7 kg)

### Compliances

ATEX certification

In compliance with rules of maritime classification societies, additional VDE and IEC 60092-306.

(Equipment luminaires and lighting accessories for use on vessels)

## EXTPL Series

Ex. Atex LED Robust Tri-Proof Light 30Watt 3.000Lumens

### Ordering information

Article No.:	Beam Angle	Light Colour	Voltage	Finish	Specialties
EXTPL-30W-39-77-HVE	Wide beam 180°	3900K Natural White	100-305Vac 50~60Hz	Black	Standard supplied with 20-30Vdc powered EMG

### Special Projects

We may be able to accommodate your special projects, so please don't hesitate to ask about additional options. Minimum order quantities and/or extended lead times will apply. Contact your E-LED Lighting representative with specific inquiries.

## EXTPL Series

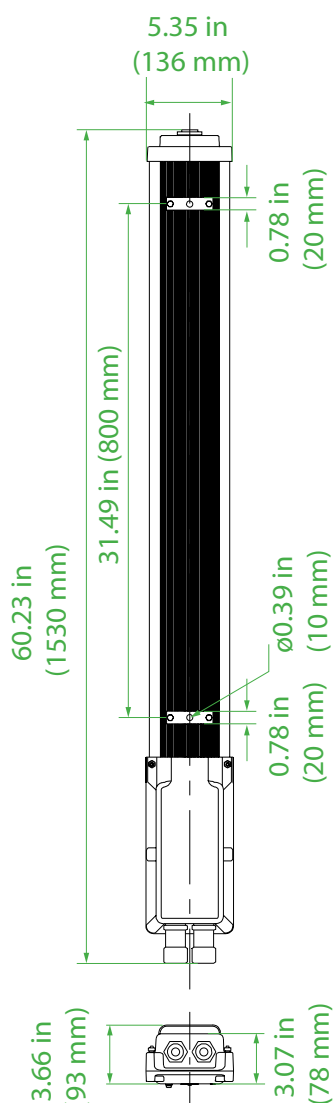
Ex. Atex LED Robust Tri-Proof Light 60Watt 6.000Lumens

Ex. Atex certified LED Tri-Proof lights for replacing TL fluorescent fixtures for various interior- and exterior applications such as stores, technical areas, decks etc. Standard supplied with 5Watt 24Vdc wired emergency circuit.

Ex ATEX certification



### Dimensions



### Technical Information

<b>Material:</b>	Powder coated anodized seawater resistant aluminium
<b>Finish:</b>	Black
<b>Hardware:</b>	Marine grade A4 316 stainless steel
<b>Lens:</b>	180°
<b>IP Rating:</b>	IP66
<b>Light Source:</b>	60Watt 100Lumens per Watt Natural White 3900K CRI > 85
<b>Power Source:</b>	100-305Vac 50~60Hz Sosen Electronics SS-60H-42 Overload, over-voltage, over-temperature and short circuit protection. Potted driver
<b>Ambient Temperature:</b>	Operating Temperature -40°C ~ +55°
<b>Cable Entry:</b>	2 x M25 Cable Gland A4 316 stainless steel Ex. Atex certified
<b>Mounting:</b>	A4 316 Stainless Steel bracket
<b>Fixture weight:</b>	14.55 lbs (6,6kg)

### Compliances

ATEX certification

In compliance with rules of maritime classification societies, additional VDE and IEC 60092-306.

(Equipment luminaires and lighting accessories for use on vessels)

## EXTPL Series

Ex. Atex LED Robust Tri-Proof Light 60Watt 6.000Lumens

### Ordering information

Article No.:	Beam Angle	Light Colour	Voltage	Finish	Specialties
EXTPL-60W-39-137-HVE	Wide beam 180°	3900K Natural White	100-305Vac 50~60Hz	Black	Standard supplied with 20-30Vdc powered EMG

### Special Projects

We may be able to accommodate your special projects, so please don't hesitate to ask about additional options. Minimum order quantities and/or extended lead times will apply. Contact your E-LED Lighting representative with specific inquiries.

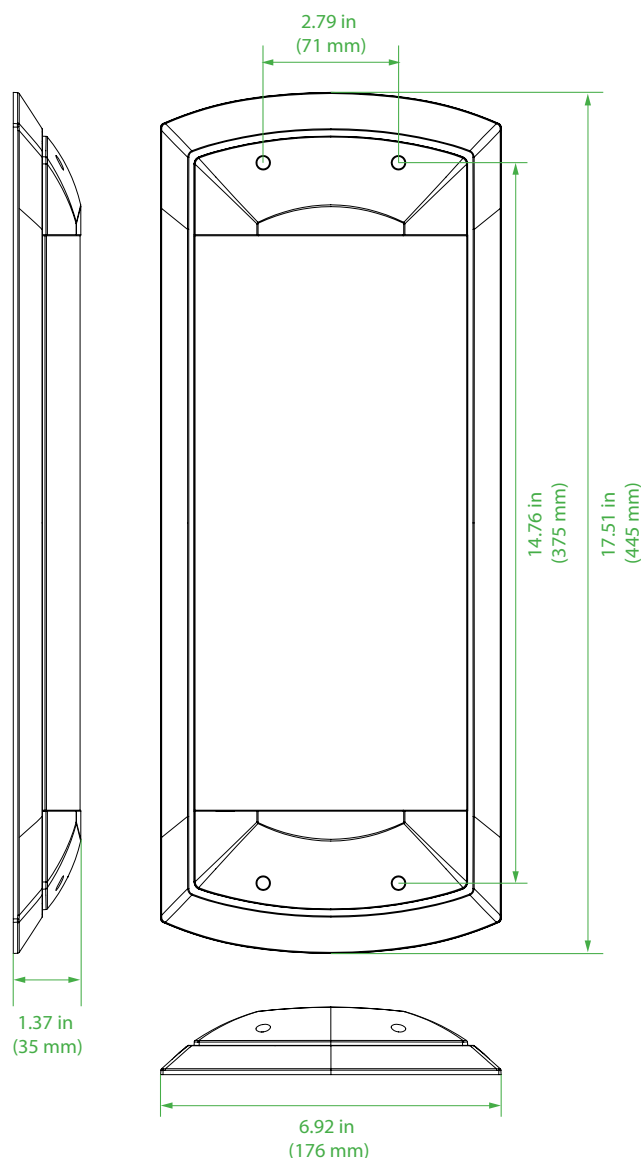
## MPFL Series

Multi-Purpose LED Utility Light 18Watt 2.250Lumens

*Multi-purpose LED utility lights available for various interior technical applications such as cabins, corridors, stairs, stores, galley/pantry, mess room, workshops, bridge, engine room etc.*



### Dimensions



### Technical Information

<b>Material:</b>	Polyamide (PA), aluminium and polycarbonate cover
<b>Lens:</b>	160°
<b>IP Rating:</b>	IP55
<b>Light Source:</b>	18Watt
	140Lumens per Watt
	3900K Natural White (additional RED available)
	3000K Warm White and 5500K Cool White available on request
	CRI > 85
<b>Power Source:</b>	85-265Vac 50~60Hz (10-30Vdc optional)
<b>Ambient Temperature:</b>	Operating temperature -20°C ~ +50°
<b>Cable:</b>	30cm power cable
<b>Mounting:</b>	Surface- or recessed mount - 4 x M2 screw entries
<b>Fixture weight:</b>	2.86 lbs (1,3 kg)

### Compliances

In compliance with rules of maritime classification societies, additional VDE and IEC 60092-306.  
(Equipment luminaires and lighting accessories for use on vessels)



## MPFL Series

Multi-Purpose LED Utility Light 18Watt 2.250Lumens

### Ordering information

Article No.:	Beam Angle	Light Colour	Voltage	Finish	Specialties
MPFL-18W-30-WH-HV	Wide beam 160°	3000K Warm White	85-265Vac 50~60Hz	White	
MPFL-18W-39+E-WH-H/L	Wide beam 160°	3900K Natural White	85-265Vac 50~60Hz + 10-30Vdc	White	Dual voltage
MPFL-18W-39+R-WH-HV	Wide beam 160°	3900K Natural White + Red	85-265Vac 50~60Hz	White	White main circuit + Red back-up circuit
MPFL-18W-39+R-WH-LV	Wide beam 160°	3900K Natural White + Red	10-30Vdc	White	White main circuit + Red back-up circuit
MPFL-18W-39-WH-HV	Wide beam 160°	3900K Natural White	85-265Vac 50~60Hz	White	
MPFL-18W-39-WH-LV	Wide beam 160°	3900K Natural White	10-30Vdc	White	
MPFL-18W-55-WH-LV	Wide beam 160°	5500K Cool White	10-30Vdc	White	

### Special Projects

We may be able to accommodate your special projects, so please don't hesitate to ask about additional options. Minimum order quantities and/or extended lead times will apply. Contact your E-LED Lighting representative with specific inquiries.

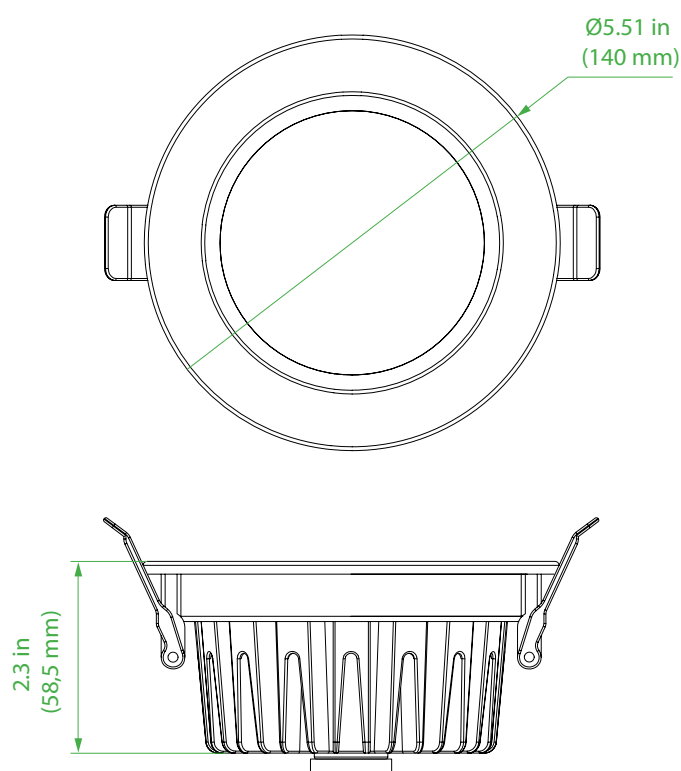
## RLDL Series

LED Downlight 15Watt 1.500Lumens

*LED downlight with reflector available for various interior- and technical applications such as accommodation, passengers area, bridge, corridor etc. Standard supplied with dimmable driver.*



### Dimensions



Cut out = 4.92 in (125 mm)

### Technical Information

<b>Material:</b>	Anodized aluminium housing and trim ring
<b>Finish:</b>	White Trim Ring (optional colours on request *1)
<b>Lens:</b>	140°
<b>IP Rating:</b>	IP44
<b>Light Source:</b>	15Watt 100Lumens per Watt Natural White 3900K or Warm White 3000K (optional red- or blue lens available on request) CRI > 85
<b>Power Source:</b>	100-305Vac 50~60Hz (10-30Vdc optional or 3 hours battery powered emergency circuit optional) LiFud LF-GDE023YF0350U Dimmable driver (0-10Vdc – PWM – resistance) Overload, over-voltage, over-temperature and short circuit protection.
<b>Ambient Temperature:</b>	Operating temperature -30°C ~ +50°
<b>Mounting:</b>	Heavy spring clips for ceilings max. 1.37 in (35 mm) (standard supplied with fixed driver bracket *3)
<b>Fixture weight:</b>	1.54 lbs (0,7 kg)

### Compliances

In compliance with rules of maritime classification societies, additional VDE and IEC 60092-306.  
(Equipment luminaires and lighting accessories for use on vessels)

## RLDL Series

LED Downlight 15Watt 1.500Lumens

### Ordering information

Article No.:	Beam Angle	Light Colour	Voltage	Finish	Specialties
RLDL-15-30WH-HV	Wide beam 140°	3000K Warm White	100-305Vac 50~60Hz	White	Dimmable driver
RLDL-15-30WH-HV+BE	Wide beam 140°	3000K Warm White	100-305Vac 50~60Hz	White	Dimmable driver & 3H battery powered EMG
RLDL-15-30WH-LV	Wide beam 140°	3000K Warm White	10-30Vdc	White	Dimmable with DRK series dimmer
RLDL-15-39WH-HV	Wide beam 140°	3900K Natural White	100-305Vac 50~60Hz	White	Dimmable driver
RLDL-15-39WH-HV+BE	Wide beam 140°	3900K Natural White	100-305Vac 50~60Hz	White	Dimmable driver & 3H battery powered EMG
RLDL-15-39WH-HVB	Wide beam 140°	Blue	100-305Vac 50~60Hz	White	Dimmable driver & blue lens
RLDL-15-39WH-HVR	Wide beam 140°	Red	100-305Vac 50~60Hz	White	Dimmable driver & red lens
RLDL-15-39WH-LV	Wide beam 140°	3900K Natural White	10-30Vdc	White	Dimmable with DRK series dimmer
RLDL-15-39WH-LVB	Wide beam 140°	Blue	10-30Vdc	White	Dimmable with DRK series dimmer & blue lens
RLDL-15-39WH-LVR	Wide beam 140°	Red	10-30Vdc	White	Dimmable with DRK series dimmer & red lens

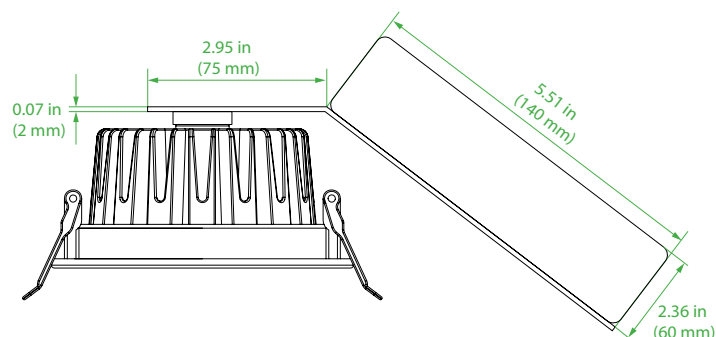
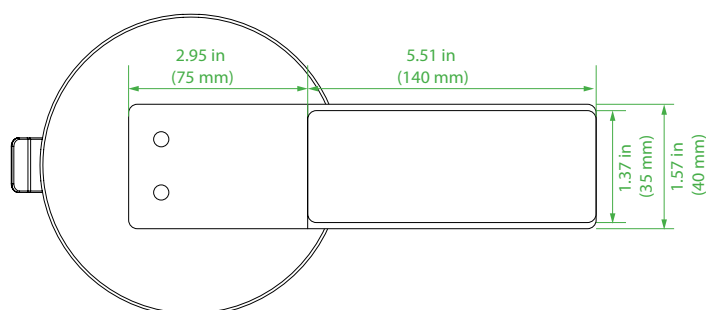
\*1 Optional RAL colour available for cover ring:

Minimal order quantities and extended lead times will apply for custom colours.

\*2 Optional red- or blue lenses available:

Red- or blue lenses available from stock.

\*3 Standard fixed driver bracket:



### Special Projects

We may be able to accommodate your special projects, so please don't hesitate to ask about additional options. Minimum order quantities and/or extended lead times will apply. Contact your E-LED Lighting representative with specific inquiries.

Product design and specifications are subject to change without notice. The most current specification sheets can be found at [www.E-LEDLighting.com](http://www.E-LEDLighting.com)

E-LED Lighting BV & Inc.

European Office: Tel: +31 (0)346 28 62 62, E-mail [Info@E-LEDLighting.com](mailto:Info@E-LEDLighting.com)

United States Office: Tel: +1 (561) 776-1702, E-mail [Info@E-LEDLighting.com](mailto:Info@E-LEDLighting.com)

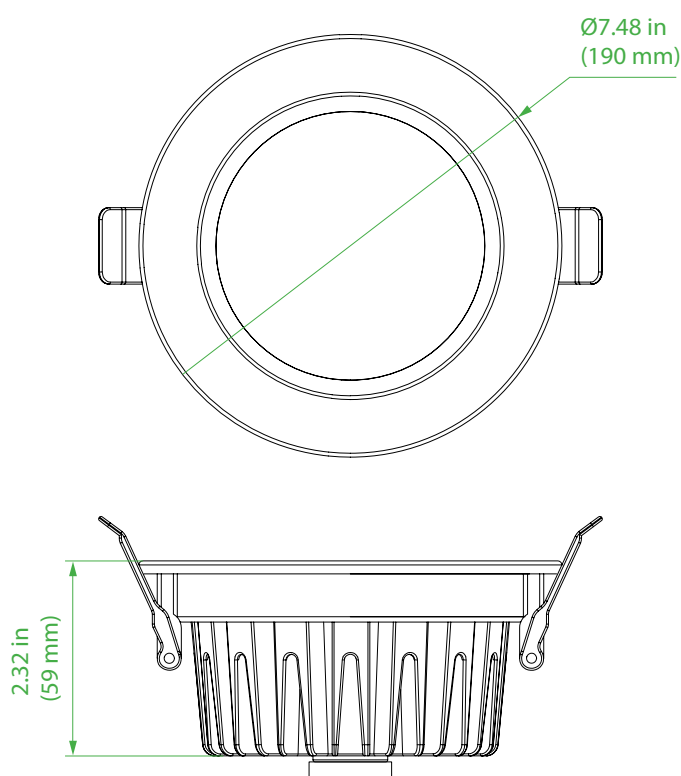
## RLDL Series

LED Downlight 21Watt 2.100Lumens

*LED downlight with reflector available for various interior- and technical applications such as accommodation, passengers area, bridge, corridor etc. Standard supplied with dimmable driver.*



### Dimensions



### Technical Information

<b>Material:</b>	Anodized aluminium housing and trim ring
<b>Finish:</b>	White Trim Ring (optional colours on request *1)
<b>Lens:</b>	140°
<b>IP Rating:</b>	IP44
<b>Light Source:</b>	21Watt 100Lumens per Watt Natural White 3900K CRI > 85
<b>Power Source:</b>	100-305Vac 50~60Hz (3 hours battery powered emergency circuit optional) LiFud LF-GDE023YF0450U Dimmable driver (0-10Vdc – PWM – resistance) Overload, over-voltage, over-temperature and short circuit protection.
<b>Ambient Temperature:</b>	Operating temperature -30°C ~ +50°
<b>Mounting:</b>	Heavy spring clips for ceilings max. 1.37 in (35 mm) (fixed driver bracket optional *3)
<b>Fixture weight:</b>	1.98 lbs (0,9 kg)

### Compliances

In compliance with rules of maritime classification societies, additional VDE and IEC 60092-306.  
(Equipment luminaires and lighting accessories for use on vessels)

## RLDL Series

LED Downlight 21Watt 2.100Lumens

### Ordering information

Article No.:	Beam Angle	Light Colour	Voltage	Finish	Specialties
RLDL-21-39WH-HV	Wide beam 140°	3900K Natural White	100-305Vac 50~60Hz	White	Standard supplied with dimmable driver
RLDL-21-39WH-HV+BE	Wide beam 140°	3900K Natural White	100-305Vac 50~60Hz	White	Dimmable driver & 3H battery powered EMG

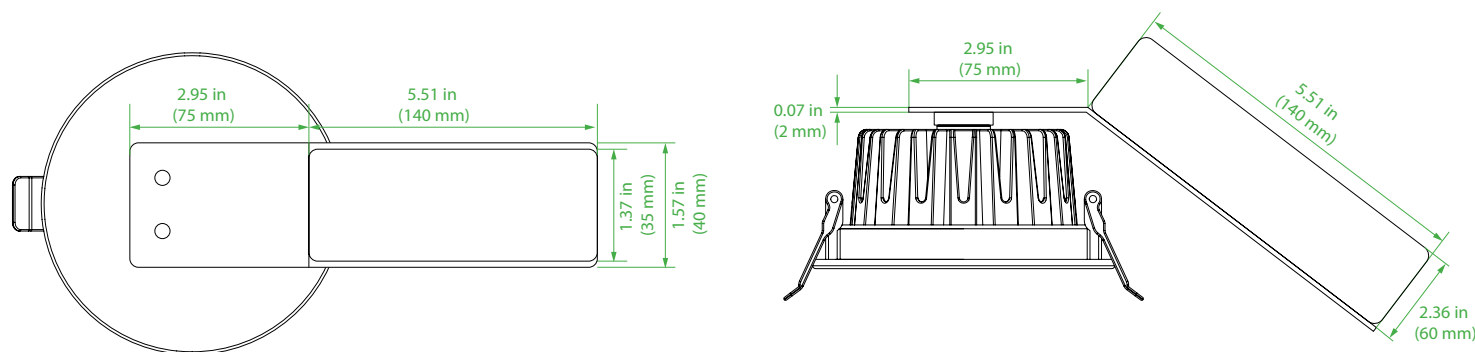
\*1 Optional RAL colour available for cover ring:

Minimal order quantities and extended lead times will apply for custom colours.

\*2 Optional red- or blue lenses available:

Red- or blue lenses available from stock.

\*3 Optional fixed driver bracket:



### Special Projects

We may be able to accommodate your special projects, so please don't hesitate to ask about additional options. Minimum order quantities and/or extended lead times will apply. Contact your E-LED Lighting representative with specific inquiries.

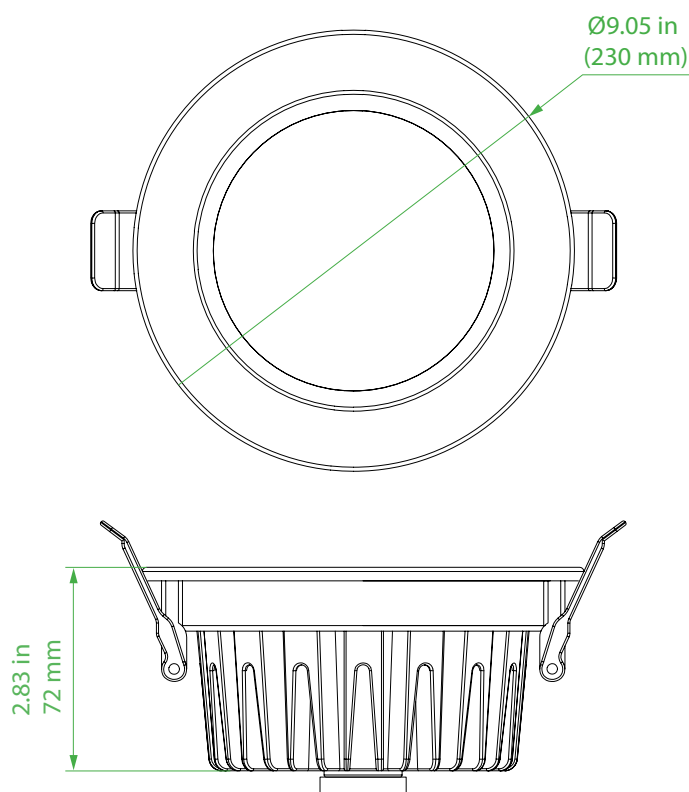
## RLDL Series

LED Downlight 30Watt 3.000Lumens

*LED downlight with reflector available for various interior- and technical applications such as accommodation, passengers area, bridge, corridor etc. Standard supplied with dimmable driver.*



### Dimensions



Cut out = 7.78 in (200 mm)

### Technical Information

<b>Material:</b>	Anodized aluminium housing and trim ring
<b>Finish:</b>	White Trim Ring (optional colours on request *1)
<b>Lens:</b>	140°
<b>IP Rating:</b>	IP44
<b>Light Source:</b>	30Watt 100Lumens per Watt Natural White 3900K CRI > 85
<b>Power Source:</b>	100-305Vac 50~60Hz LiFud LF-GDE023YF0550U Dimmable driver (0-10Vdc – PWM – resistance) Overload, over-voltage, over-temperature and short circuit protection.
<b>Ambient Temperature:</b>	Operating temperature -30°C ~ +50°
<b>Mounting:</b>	Heavy spring clips for ceilings max. 1.37 in (35 mm)
<b>Fixture weight:</b>	2.42 lbs (1,1 kg)

### Compliances

In compliance with rules of maritime classification societies, additional VDE and IEC 60092-306.  
(Equipment luminaires and lighting accessories for use on vessels)

## RLDL Series

LED Downlight 30Watt 3.000Lumens

### Ordering information

Article No.:	Beam Angle	Light Colour	Voltage	Finish	Specialties
RLDL-30-39WH-HV	Wide beam 140°	3900K Natural White	100-305Vac 50~60Hz	White	Standard supplied with dimmable driver

\*1 Optional RAL colour available for cover ring:

Minimal order quantities and extended lead times will apply for custom colours.

### Special Projects

We may be able to accommodate your special projects, so please don't hesitate to ask about additional options. Minimum order quantities and/or extended lead times will apply. Contact your E-LED Lighting representative with specific inquiries.



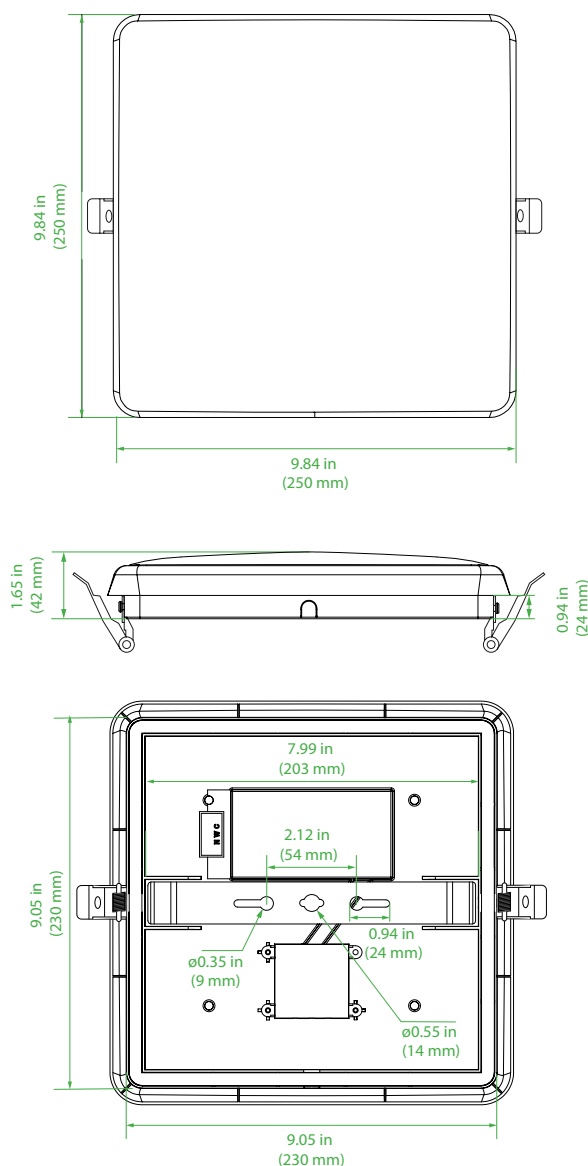


## USLC Series

### Ultra Slim LED Ceiling Light 12Watt 1.200Lumens

*Ceiling fixtures for suitable for various interior applications such as accommodation, passengers area, corridor workshop, stairways etc. Can be installed surface- or recessed. Available with emergency circuit.*

#### Dimensions



#### Technical Information

<b>Material:</b>	Polyamide (PA) and polycarbonate cover
<b>Finish:</b>	White (Silver trim ring optional)
<b>Lens:</b>	160°
<b>IK Rating:</b>	IK10
<b>IP Rating:</b>	IP55
<b>Light Source:</b>	12Watt 100Lumens per Watt 3000K Warm White CRI > 85
<b>Power Source:</b>	85-265Vac 50~60Hz (20-30Vdc emergency circuit optional)
<b>Ambient Temperature:</b>	Operating temperature -20°C ~ +50°
<b>Cable:</b>	
<b>Mounting:</b>	Surface – Fixed aluminium bracket Recessed – Heavy spring clips for ceilings max. 35mm
<b>Fixture weight:</b>	1.54 lbs (0,7kg)

#### Compliances

In compliance with rules of maritime classification societies, additional VDE and IEC 60092-306.  
(Equipment luminaires and lighting accessories for use on vessels)

## USLC Series

Ultra Slim LED Ceiling Light 12Watt 1.200Lumens

### Ordering information

Article No.:	Beam Angle	Light Colour	Voltage	Finish	Specialties
USLC-12-30-WH-HV	Wide beam 160°	3000K Warm White	85-265Vac 50~60Hz	White	Standard supplied with fixed aluminium bracket and heavy spring clips
USLC-12-30-WH-HV+E	Wide beam 160°	3000K Warm White	85-265Vac 50~60Hz + 20-30Vdc	White	Standard supplied with fixed aluminium bracket and heavy spring clips
USLC-12-30-SL-HV	Wide beam 160°	3000K Warm White	85-265Vac 50~60Hz	Silver	Standard supplied with fixed aluminium bracket and heavy spring clips
USLC-12-30-SL-HV+E	Wide beam 160°	3000K Warm White	85-265Vac 50~60Hz + 20-30Vdc	Silver	Standard supplied with fixed aluminium bracket and heavy spring clips

### Special Projects

We may be able to accommodate your special projects, so please don't hesitate to ask about additional options. Minimum order quantities and/or extended lead times will apply. Contact your E-LED Lighting representative with specific inquiries.

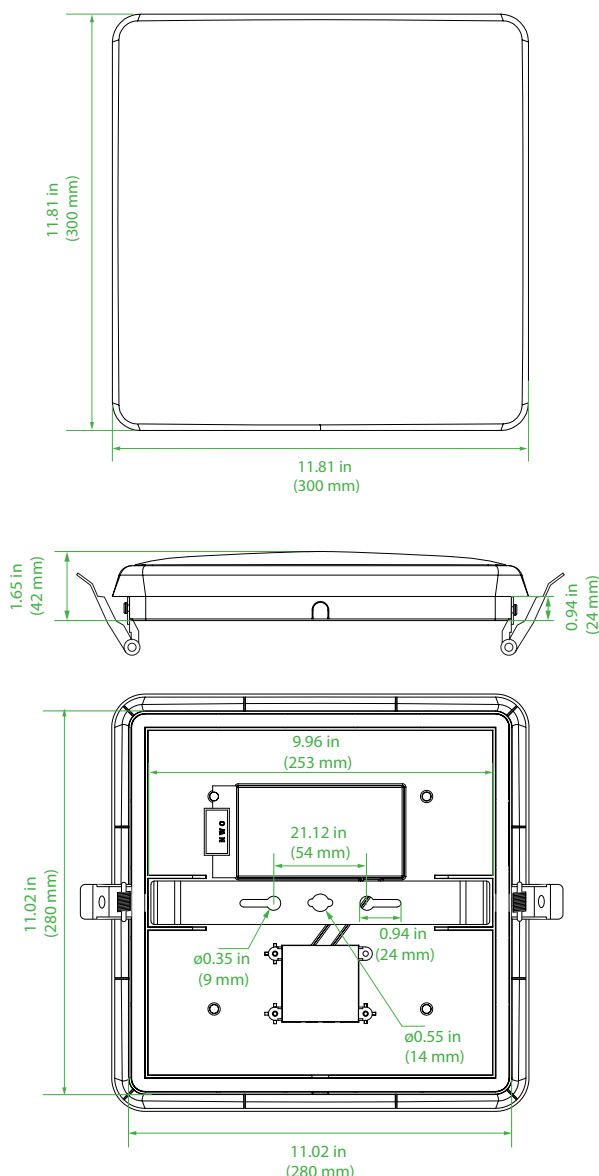


## USLC Series

Ultra Slim LED Ceiling Light 18Watt 1.800Lumens

*Ceiling fixtures for suitable for various interior applications such as accommodation, passengers area, corridor workshop, stairways etc. Can be installed surface- or recessed. Available with emergency circuit.*

### Dimensions



### Technical Information

<b>Material:</b>	Polyamide (PA) and polycarbonate cover
<b>Finish:</b>	White (Silver trim ring optional)
<b>Lens:</b>	160°
<b>IK Rating:</b>	IK10
<b>IP Rating:</b>	IP55
<b>Light Source:</b>	18Watt 100Lumens per Watt 3000K Warm White CRI > 85
<b>Power Source:</b>	85-265Vac 50~60Hz (20-30Vdc emergency circuit optional)
<b>Ambient Temperature:</b>	Operating temperature -20°C ~ +50°
<b>Cable:</b>	
<b>Mounting:</b>	Surface – Fixed aluminium bracket Recessed – Heavy spring clips for ceilings max. 35mm
<b>Fixture weight:</b>	1.98 lbs (0,9kg)

### Compliances

In compliance with rules of maritime classification societies, additional VDE and IEC 60092-306.  
(Equipment luminaires and lighting accessories for use on vessels)

## USLC Series

Ultra Slim LED Ceiling Light 18Watt 1.800Lumens

### Ordering information

Article No.:	Beam Angle	Light Colour	Voltage	Finish	Specialties
USLC-18-30-WH-HV	Wide beam 160°	3000K Warm White	85-265Vac 50~60Hz	White	Standard supplied with fixed aluminium bracket and heavy spring clips
USLC-18-30-WH-HV+E	Wide beam 160°	3000K Warm White	85-265Vac 50~60Hz + 20-30Vdc	White	Standard supplied with fixed aluminium bracket and heavy spring clips
USLC-18-30-SL-HV	Wide beam 160°	3000K Warm White	85-265Vac 50~60Hz	Silver	Standard supplied with fixed aluminium bracket and heavy spring clips
USLC-18-30-SL-HV+E	Wide beam 160°	3000K Warm White	85-265Vac 50~60Hz + 20-30Vdc	Silver	Standard supplied with fixed aluminium bracket and heavy spring clips

### Special Projects

We may be able to accommodate your special projects, so please don't hesitate to ask about additional options. Minimum order quantities and/or extended lead times will apply. Contact your E-LED Lighting representative with specific inquiries.

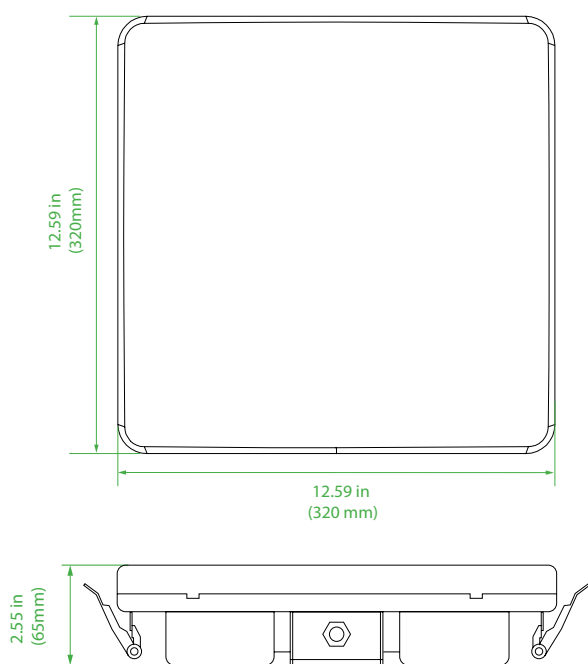
## USLC Series

Ultra Slim LED Ceiling Light 20Watt 2.000Lumens

*Ceiling fixtures suitable for various interior applications such as accommodation, passengers area, corridor workshop, stairways etc.  
Can be installed surface- or recessed. Standard supplied with dimmable driver and 3hours battery powered emergency circuit.*



### Dimensions



### Technical Information

<b>Material:</b>	Polyamide (PA) and polycarbonate cover
<b>Finish:</b>	White
<b>Lens:</b>	180°
<b>IP Rating:</b>	IP66
<b>Light Source:</b>	20Watt
	100Lumens per Watt
	3000K Warm White
	CRI > 85
<b>Power Source:</b>	85-265Vac 50~60Hz
<b>Ambient Temperature:</b>	Operating temperature -20°C ~ +45°
<b>Cable:</b>	
<b>Mounting:</b>	Surface – Fixed aluminium bracket
	Recessed – Heavy spring clips for ceilings max. 35mm
<b>Fixture weight:</b>	3.74 lbs (1,7kg)

### Compliances

In compliance with rules of maritime classification societies, additional VDE and IEC 60092-306.  
(Equipment luminaires and lighting accessories for use on vessels)

## USLC Series

Ultra Slim LED Ceiling Light 20Watt 2.000Lumens

### Ordering information

Article No.:	Beam Angle	Light Colour	Voltage	Finish	Specialties
USLC-20-30-WH-HVE	Wide beam 180°	3000K Warm White	85-265Vac 50~60Hz	White	Standard supplied with dimmable driver and 3hours battery powered emergency circuit

### Special Projects

We may be able to accommodate your special projects, so please don't hesitate to ask about additional options. Minimum order quantities and/or extended lead times will apply. Contact your E-LED Lighting representative with specific inquiries.

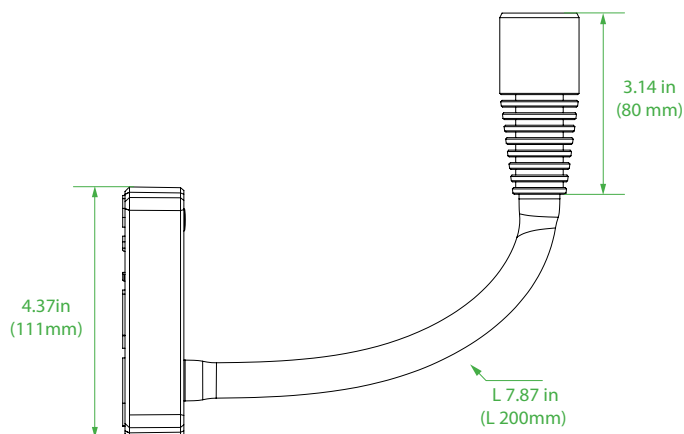
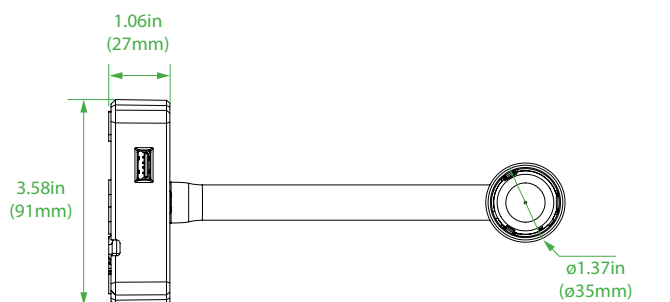
## DLRL Series

### Cabin Bunk LED Light 8Watt 640Lumens

*Desk LED Reading light is a desk-/bunk light for interior use. Standard supplied with dimmable driver and USB port. Due the 20cm flexible arm specific lighting spots can be lighted.*



#### Dimensions



#### Technical Information

<b>Material:</b>	Polyamide (PA) metal cover plate and polycarbonate cover
<b>Lens:</b>	60°
<b>IP Rating:</b>	IP20
<b>Light Source:</b>	8Watt 80Lumens per Watt Warm White 3000K CRI > 85
<b>Power Source:</b>	85-265Vac 50~60Hz Short circuit protection Potted driver
<b>USB:</b>	5V 1A
<b>Ambient Temperature:</b>	Operating temperature -20° ~ +55°
<b>Installation:</b>	Internal 3-pole power terminal
<b>Mounting:</b>	Surface mount
<b>Fixture weight:</b>	1.1 lbs (0,5 kg)

#### Compliances

In compliance with rules of maritime classification societies, additional VDE and IEC 60092-306.  
(Equipment luminaires and lighting accessories for use on vessels)



## DLRL Series

Cabin Bunk LED Light 8Watt 640Lumens

### Ordering information

Article No.:	Beam Angle	Light Colour	Voltage	Finish	Specialties
DLRL-08-30AT-HV	Spot beam 60°	3000K Warm White	85-265Vac 50~60Hz	Anthracite Grey	Dimmable driver & USB port

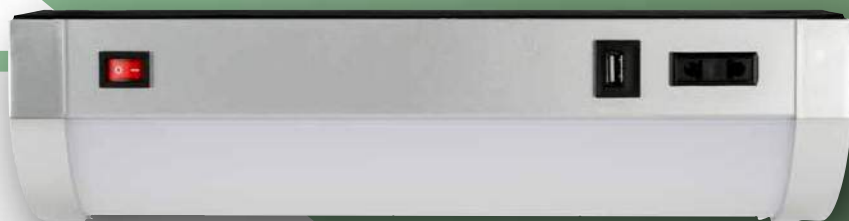
### Special Projects

We may be able to accommodate your special projects, so please don't hesitate to ask about additional options. Minimum order quantities and/or extended lead times will apply. Contact your E-LED Lighting representative with specific inquiries.

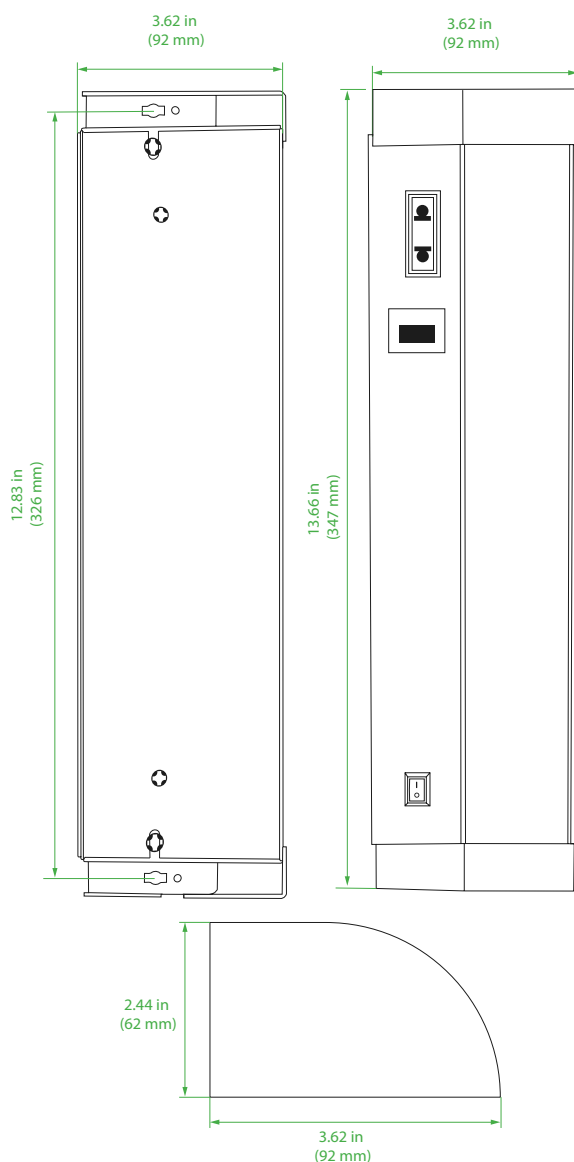
## BLL Series

### Bunk LED Light 10Watt 1.000Lumens

*Bunk light for interior use in cabin, with standard on/off switch, USB port supplied and outlet. Available with on/off switch and USB port only.*



## Dimensions



## Technical Information

<b>Material:</b>	Polyamide (PA) and polycarbonate cover
<b>Lens:</b>	90°
<b>IP Rating:</b>	IP20
<b>Light Source:</b>	10Watt
	100Lumens per Watt
	Warm White 3000K
	CRI > 85
<b>Power Source:</b>	85-265Vac 50~60Hz
<b>USB:</b>	1 x 5V/2A
<b>Ambient Temperature:</b>	Operating temperature -20°C ~ +45°
<b>Installation:</b>	Internal 3-pole power terminal
<b>Mounting:</b>	Surface mount
<b>Fixture weight:</b>	1.54 lbs (0,7kg)

## Compliances

In compliance with rules of maritime classification societies, additional VDE and IEC 60092-306.  
(Equipment luminaires and lighting accessories for use on vessels)

## BLL Series

Bunk LED Light 10Watt 1.000Lumens

### Ordering information

Article No.:	Beam Angle	Light Colour	Voltage	Finish	Specialties
BLL-10-30SL-HV	Wide beam 90°	3000K Warm White	85-265Vac 50~60Hz	Silver grey	Supplied with on- off switch
BLL-10-30SL-HV+0	Wide beam 90°	3000K Warm White	85-265Vac 50~60Hz	Silver grey	Supplied with on- off switch and power outlet

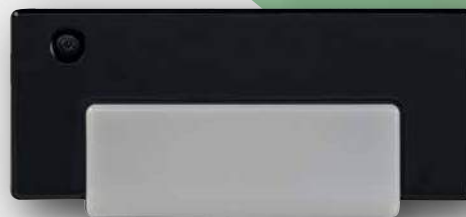
### Special Projects

We may be able to accommodate your special projects, so please don't hesitate to ask about additional options. Minimum order quantities and/or extended lead times will apply. Contact your E-LED Lighting representative with specific inquiries.

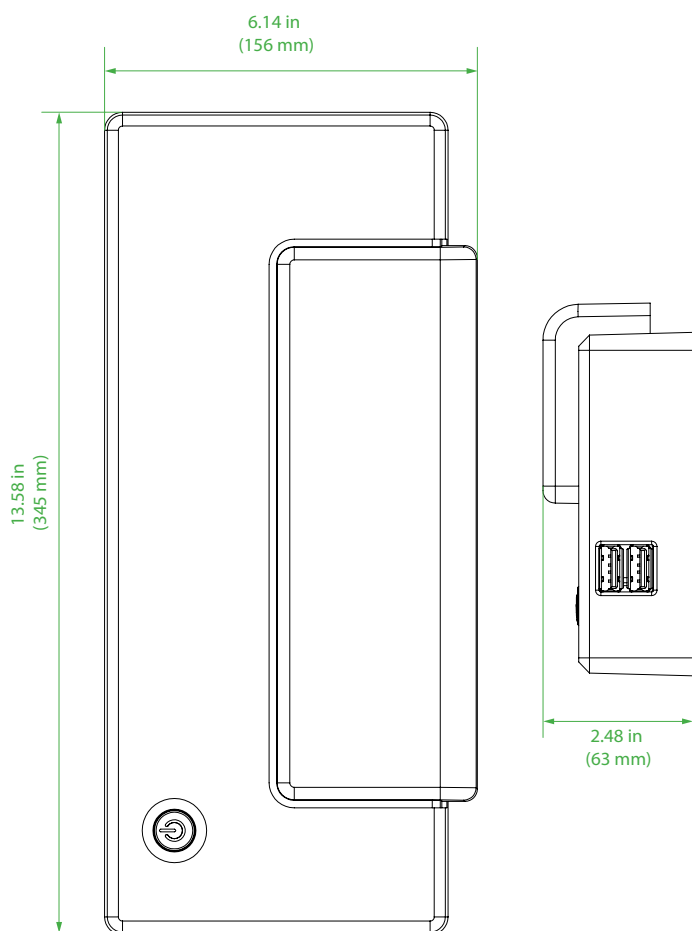
## CBLL Series

Cabin Bunk LED Light 8Watt 800Lumens

*Cabin bunk light is a bed- bunk light for interior use. Standard supplied with dimmable driver and double USB ports. Available in anthracite grey and white.*



### Dimensions



### Technical Information

<b>Material:</b>	Polyamide (PA) and polycarbonate cover
<b>Lens:</b>	90°
<b>IP Rating:</b>	IP20
<b>Light Source:</b>	8Watt
	100Lumens per Watt
	Warm White 3000K
	CRI > 85
<b>Power Source:</b>	85-265Vac 50~60Hz
	Ply Power LAG20-18U
	Short circuit protection
	Potted driver
<b>USB:</b>	2 x 5V/1A
<b>Ambient Temperature:</b>	Operating temperature -20°C ~ +45°
<b>Installation:</b>	Internal 3-pole power terminal
<b>Mounting:</b>	Surface mount
<b>Fixture weight:</b>	1.1 lbs (0,5 kg)

### Compliances

In compliance with rules of maritime classification societies, additional VDE and IEC 60092-306.  
(Equipment luminaires and lighting accessories for use on vessels)

## CBLL Series

Cabin Bunk LED Light 8Watt 800Lumens

### Ordering information

Article No.:	Beam Angle	Light Colour	Voltage	Finish	Specialties
CBLL-08-30AT-HV	Wide beam 90°	3900K Natural White	100-305Vac 50~60Hz	Anthracite Grey	Standard supplied with dimmable driver and double USB ports
CBLL-08-30WH-HV	Wide beam 90°	3900K Natural White	100-305Vac 50~60Hz	White	Standard supplied with dimmable driver and double USB ports

### Special Projects

We may be able to accommodate your special projects, so please don't hesitate to ask about additional options. Minimum order quantities and/or extended lead times will apply. Contact your E-LED Lighting representative with specific inquiries.

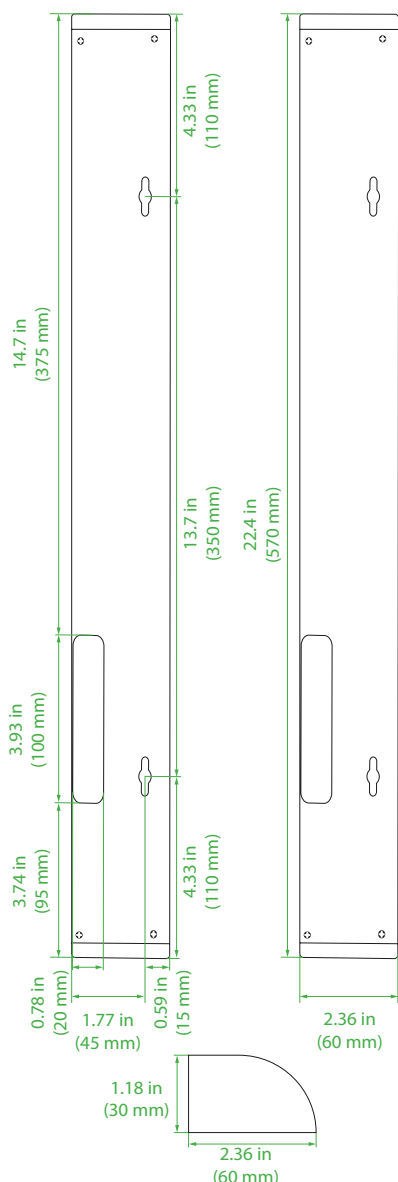


## MPCL Series

Multi-Purpose Cabinet Lights 10Watt 1.300Lumens

*Multi-purpose LED cabinet lights can be installed for various interior applications such as corners, mirrors, cabins, corridors, bathrooms, stairways etc. Available with on/off switch and razor sockets in different variations.*

### Dimensions



### Technical Information

<b>Material:</b>	Powder coated aluminium and polycarbonate cover
<b>Lens:</b>	140°
<b>IP Rating:</b>	IP44
<b>Light Source:</b>	10Watt 130Lumens per Watt 3000K Warm White CRI > 85
<b>Power Source:</b>	85-265Vac 50~60Hz
<b>Ambient Temperature:</b>	Operating temperature -20°C ~ +45°
<b>Installation:</b>	Internal 3-pole power terminal
<b>Mounting:</b>	Surface mount
<b>Fixture weight:</b>	0.88 lbs (0,4 kg)

### Compliances

ETL certified  
SAA certified  
In compliance with rules of maritime classification societies, additional VDE and IEC 60092-306.  
(Equipment luminaires and lighting accessories for use on vessels)

## MPCL Series

Multi-Purpose Cabinet Lights 10Watt 1.300Lumens

### Ordering information

Article No.:	Beam Angle	Light Colour	Voltage	Finish	Specialties
MPCL-10-30WH-HV	Wide beam 140°	3000K Warm White	85-265Vac 50~60Hz	White	
MPCL-10-30WH-HV+S	Wide beam 140°	3000K Warm White	85-265Vac 50~60Hz	White	Supplied with on- off switch
MPCL-10-30WH-HV+S+O	Wide beam 140°	3000K Warm White	85-265Vac 50~60Hz	White	Supplied with on- off switch and outlet

### Special Projects

We may be able to accommodate your special projects, so please don't hesitate to ask about additional options. Minimum order quantities and/or extended lead times will apply. Contact your E-LED Lighting representative with specific inquiries.



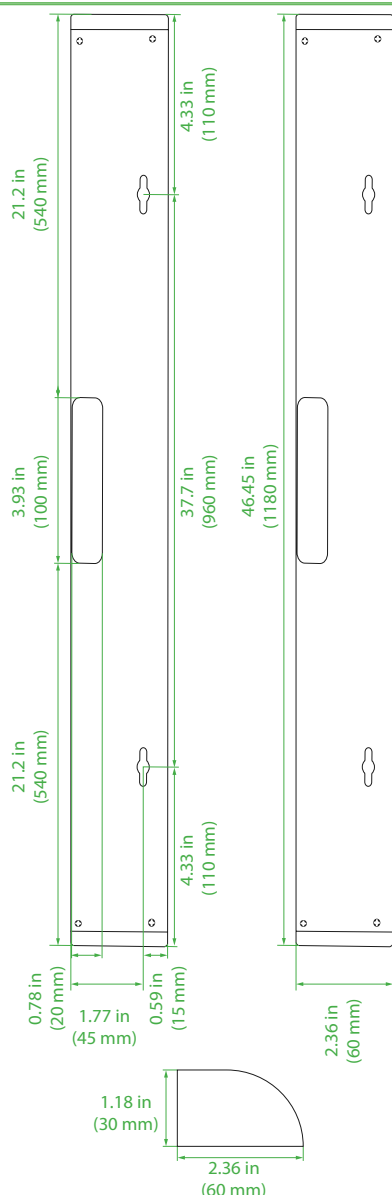


## MPCL Series

Multi-Purpose Cabinet Lights 20Watt 2.600Lumens

*Multi-purpose LED cabinet lights can be installed for various interior applications such as corners, mirrors, cabins, corridors, bathrooms, stairways etc. Available with on/off switch and razor sockets in different variations.*

### Dimensions



### Technical Information

<b>Material:</b>	Powder coated aluminium and polycarbonate cover
<b>Lens:</b>	140°
<b>IP Rating:</b>	IP44
<b>Light Source:</b>	20Watt
	130Lumens per Watt
	3000K Warm White
	CRI > 85
<b>Power Source:</b>	85-265Vac 50~60Hz
<b>Ambient Temperature:</b>	Operating temperature -20°C ~ +45°
<b>Cable:</b>	
<b>Mounting:</b>	Surface mount
<b>Fixture weight:</b>	1.32 lbs (0,6 kg)

### Compliances

ETL certified

SAA certified

In compliance with rules of maritime classification societies, additional VDE and IEC 60092-306.

(Equipment luminaires and lighting accessories for use on vessels)

## MPCL Series

Multi-Purpose Cabinet Lights 20Watt 2.600Lumens

### Ordering information

Article No.:	Beam Angle	Light Colour	Voltage	Finish	Specialties
MPCL-20-30WH-HV+S	Wide beam 140°	3000K Warm White	85-265Vac 50~60Hz	White	Supplied with on- off switch
MPCL-20-30WH-HV+S+O	Wide beam 140°	3000K Warm White	85-265Vac 50~60Hz	White	Supplied with on- off switch and outlet

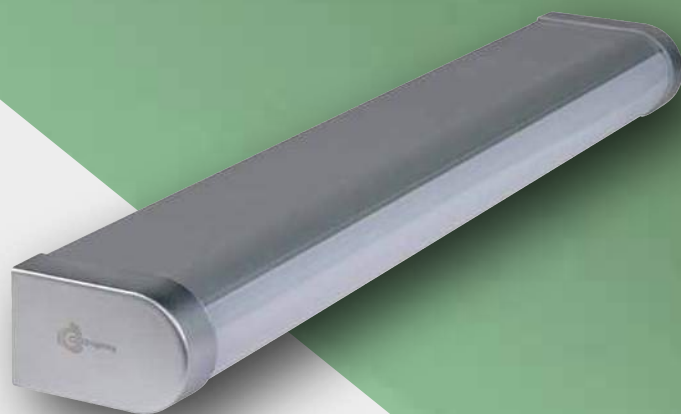
### Special Projects

We may be able to accommodate your special projects, so please don't hesitate to ask about additional options. Minimum order quantities and/or extended lead times will apply. Contact your E-LED Lighting representative with specific inquiries.

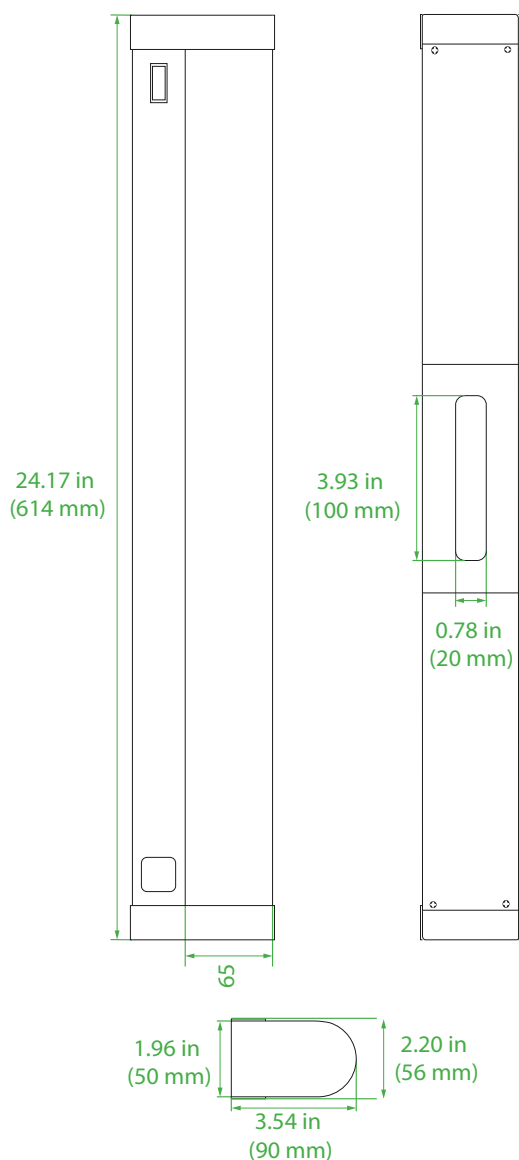
## MLML Series

LED Mirror Light 10Watt 1.000Lumens

*LED mirror light fixture for installation in bathroom areas.  
Standard supplied with covered outlet and on-off switch.*



### Dimensions



### Technical Information

<b>Material:</b>	Polyamide (PA) and polycarbonate cover
<b>Lens:</b>	90°
<b>IP Rating:</b>	IP44
<b>Light Source:</b>	10Watt
	100Lumens per Watt
	Warm White 3000K
	CRI > 85
<b>Power Source:</b>	85-265Vac 50~60Hz
<b>Ambient Temperature:</b>	Operating temperature -20°C ~ +45°
<b>Installation:</b>	Internal 3-pole power terminal
<b>Mounting:</b>	Surface mount
<b>Fixture weight:</b>	1.76 lbs (0,8 kg)

### Compliances

In compliance with rules of maritime classification societies,  
additional VDE and IEC 60092-306.  
(Equipment luminaires and lighting accessories for use on vessels)

## MLML Series

LED Mirror Light 10Watt 1.000Lumens

### Ordering information

Article No.:	Beam Angle	Light Colour	Voltage	Finish	Specialties
MLML-10-30SL-HV+0	Wide beam 90°	3000K Warm White	85-265Vac 50~60Hz	Silver grey	Supplied with on-off switch and covered outlet

### Special Projects

We may be able to accommodate your special projects, so please don't hesitate to ask about additional options. Minimum order quantities and/or extended lead times will apply. Contact your E-LED Lighting representative with specific inquiries.

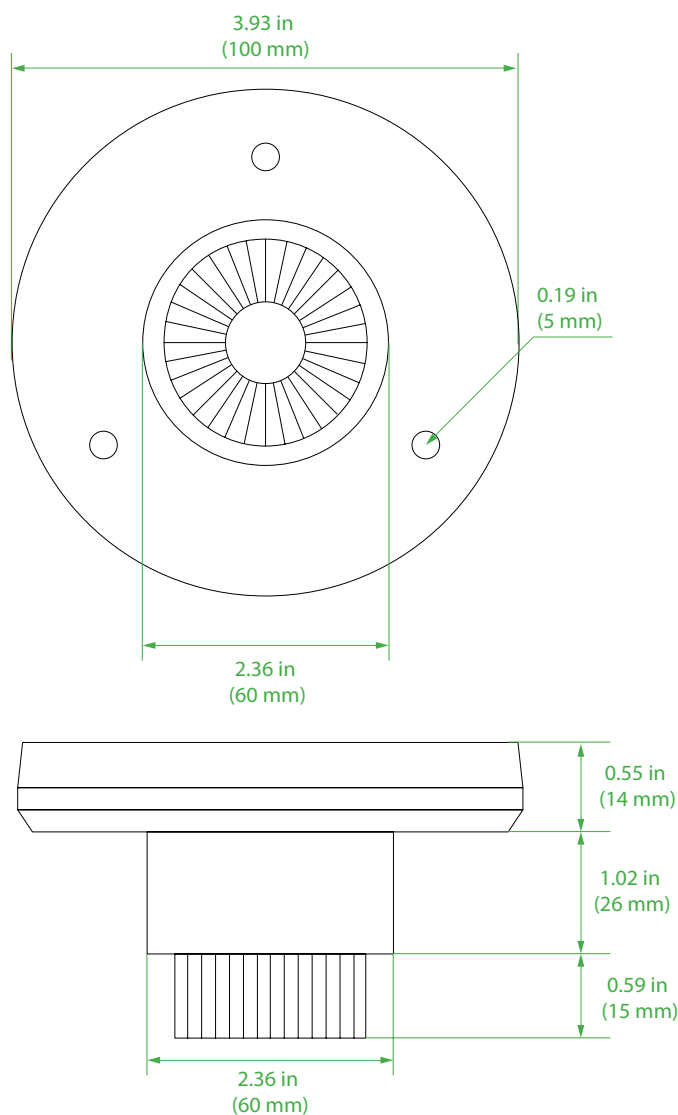
## ANT Series

LED Downlight 9 Watt 900 Lumens

*LED downlight supplied with robust design suitable for exterior applications. Available in 5Watt 10-30Vdc version*



### Dimensions



### Technical Information

<b>Material:</b>	Glass nylon and A4 316 stainless steel trim ring
<b>Finish:</b>	Polished stainless
<b>Lens:</b>	50°
<b>IP Rating:</b>	IP67
<b>Light Source:</b>	9Watt 100Lumens per Watt Natural White 3900K CRI > 85
<b>Power Source:</b>	100-265Vac 50~60Hz (5Watt 10-30Vdc optional*1) Meanwell APC-8-700 Potted driver
<b>Ambient Temperature:</b>	Operating temperature -30°C ~ +55°
<b>Mounting:</b>	Screw mount
<b>Fixture weight:</b>	1.1 lbs (1,10 kg)

### Compliances

In compliance with rules of maritime classification societies, additional VDE and IEC 60092-306.  
(Equipment luminaires and lighting accessories for use on vessels)

# ANT Series

LED Downlight 9 Watt 900 Lumens

## Ordering information

Article No.:	Beam Angle	Light Colour	Voltage	Finish	Specialties
ANT-9-39PS-HV	Medium beam 50°	3900K Natural White	100-265Vac 50~60Hz	Polished Stainless	
ANT-9-27PS-LV (standard)	Medium beam 50°	2700K Warm White	10-30Vdc	Polished Stainless	
ANT-9-39PS-LV (standard)	Medium beam 50°	3900K Natural White	10-30Vdc	Polished Stainless	

\*1 Optional 5Watt 10-30Vdc version available:

5Watt 10-30Vdc version available in 2700K Warm White and 3900K Natural White

## Special Projects

We may be able to accommodate your special projects, so please don't hesitate to ask about additional options. Minimum order quantities and/or extended lead times will apply. Contact your E-LED Lighting representative with specific inquiries.

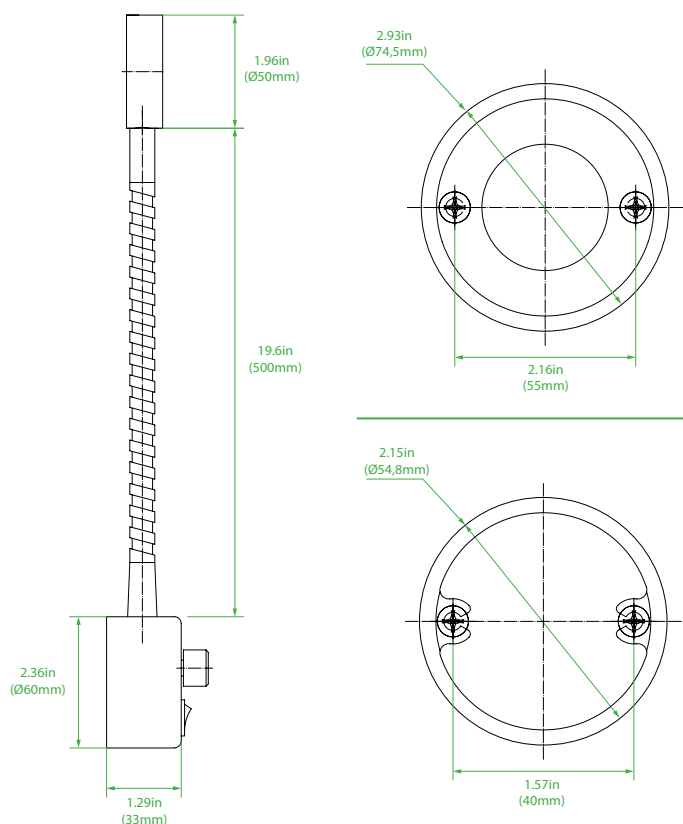
## CHFL Series

### LED Chart Light 3Watt 300Lumens

*LED chart light supplied with white- and red circuit, both dimmable, and 50cm flexible arm for lighting out specific spots.*



#### Dimensions



#### Technical Information

<b>Material:</b>	Coated aluminium
<b>Lens:</b>	120°
<b>IP Rating:</b>	IP44
<b>Light Source:</b>	3Watt
	100Lumens per Watt
	Natural White 3900K
	CRI > 75
<b>Power Source:</b>	10-30Vdc (85-265Vac 50~60Hz optional)
<b>Ambient Temperature:</b>	Operating temperature +45°
<b>Mounting:</b>	Surface mount
<b>Fixture weight:</b>	0.44 lbs (0,2 kg)

#### Compliances

In compliance with rules of maritime classification societies, additional VDE and IEC 60092-306.  
(Equipment luminaires and lighting accessories for use on vessels)



## CHFL Series

LED Chart Light 3Watt 300Lumens

### Ordering information

Article No.:	Beam Angle	Light Colour	Voltage	Finish	Specialties
CHFL-3-39/R-BL-HV	Wide beam 120°	3900K Natural White + RED	85-265Vac 50~60Hz	Black	Supplied with on- off switch and dimmable driver
CHFL-3-39/R-BL-LV	Wide beam 120°	3900K Natural White + RED	10-30Vdc	Black	Supplied with on- off switch and dimmable driver

### Special Projects

We may be able to accommodate your special projects, so please don't hesitate to ask about additional options. Minimum order quantities and/or extended lead times will apply. Contact your E-LED Lighting representative with specific inquiries.

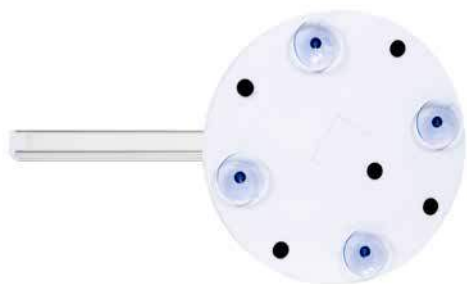
## OLDL Series

### Office LED Desk Light

Office LED desk light is designed for workspaces. The OLDL series are standard supplied with four suction cups for easy installation, and the touch control panel the light can be dimmed and set in different lighting colours.



### Dimensions



### Technical Information

<b>Material:</b>	ABS and aluminium
<b>Lens:</b>	140°
<b>IP Rating:</b>	IP20
<b>Light Source:</b>	10Watt 60Lumens per Watt 2700K-3200K-3900K-5000K-6000K CRI > 85 260° rotatable
<b>Power Source:</b>	100-265Vac 50~60Hz
<b>USB:</b>	1 x 5V/1A
<b>Ambient Temperature:</b>	Operating temperature +45°
<b>Installation:</b>	EU Plug (US Plug available on request)
<b>Mounting:</b>	Four suction cups
<b>Fixture weight:</b>	2.2 lbs (1 kg)

### Compliances

In compliance with rules of maritime classification societies, additional VDE and IEC 60092-306.  
(Equipment luminaires and lighting accessories for use on vessels)

## OLDL Series

Office LED Desk Light

### Ordering information

Article No.:	Beam Angle	Light Colour	Voltage	Finish	Specialties
OLDL-10-MC-HV	Wide beam 140°	2700K-3200K-3900K-5000K-6000K	100-265Vac 50~60Hz	White	Multiple colours available and standard supplied with a dimmable driver

### Special Projects

We may be able to accommodate your special projects, so please don't hesitate to ask about additional options. Minimum order quantities and/or extended lead times will apply. Contact your E-LED Lighting representative with specific inquiries.

## CHFL Series

LED Chart Light 2Watt 150Lumens

*LED chart light supplied with white- and red circuit, both dimmable, and 38cm flexible arm for lighting out specific spots.*



### Dimensions

### Technical Information

<b>Material:</b>	Coated aluminium
<b>Lens:</b>	120°
<b>IP Rating:</b>	IP44
<b>Light Source:</b>	2Watt
	75Lumens per Watt
	Warm White 3000K
	CRI > 75
<b>Power Source:</b>	10-30Vdc
<b>Ambient Temperature:</b>	Operating temperature +45°
<b>Mounting:</b>	Surface mount
<b>Fixture weight:</b>	0.33 lbs (0,15 kg)

### Compliances

In compliance with rules of maritime classification societies, additional VDE and IEC 60092-306.  
(Equipment luminaires and lighting accessories for use on vessels)

## CHFL Series

LED Chart Light 2Watt 150Lumens

### Ordering information

Article No.:	Beam Angle	Light Colour	Voltage	Finish	Specialties
CHFL-2-30/R-CH-LV	Wide beam 120°	3000K Warm White + RED	10-30Vdc	Chrome	Changing colour- and dimming with touch

### Special Projects

We may be able to accommodate your special projects, so please don't hesitate to ask about additional options. Minimum order quantities and/or extended lead times will apply. Contact your E-LED Lighting representative with specific inquiries.

## WRTD Series

LED Reading Light 2Watt 150Lumens 10cm rotatable

*LED reading light with blue indicator rings for easy recognition by night, standard supplied with touch dimmer.  
Blue indicator rings can be turned on- and off.*



### Dimensions

### Technical Information

<b>Material:</b>	Chrome plated aluminium
<b>Lens:</b>	120°
<b>IP Rating:</b>	IP44
<b>Light Source:</b>	2Watt
	75Lumens per Watt
	Warm White 3000K
	CRI > 75
<b>Power Source:</b>	10-30Vdc
<b>Ambient Temperature:</b>	Operating temperature +45°
<b>Mounting:</b>	Surface mount
<b>Fixture weight:</b>	0.33 lbs (0,15 kg)

### Compliances

In compliance with rules of maritime classification societies, additional VDE and IEC 60092-306.  
(Equipment luminaires and lighting accessories for use on vessels)

## WRTD Series

LED Reading Light 2Watt 150Lumens 10cm rotatable

### Ordering information

Article No.:	Beam Angle	Light Colour	Voltage	Finish	Specialties
CHFL-2-30/B-CH10-LV	Wide beam 120°	3000K Warm White	10-30Vdc	Chrome	Standard supplied with touch dimming and blue indicator rings

### Special Projects

We may be able to accommodate your special projects, so please don't hesitate to ask about additional options. Minimum order quantities and/or extended lead times will apply. Contact your E-LED Lighting representative with specific inquiries.

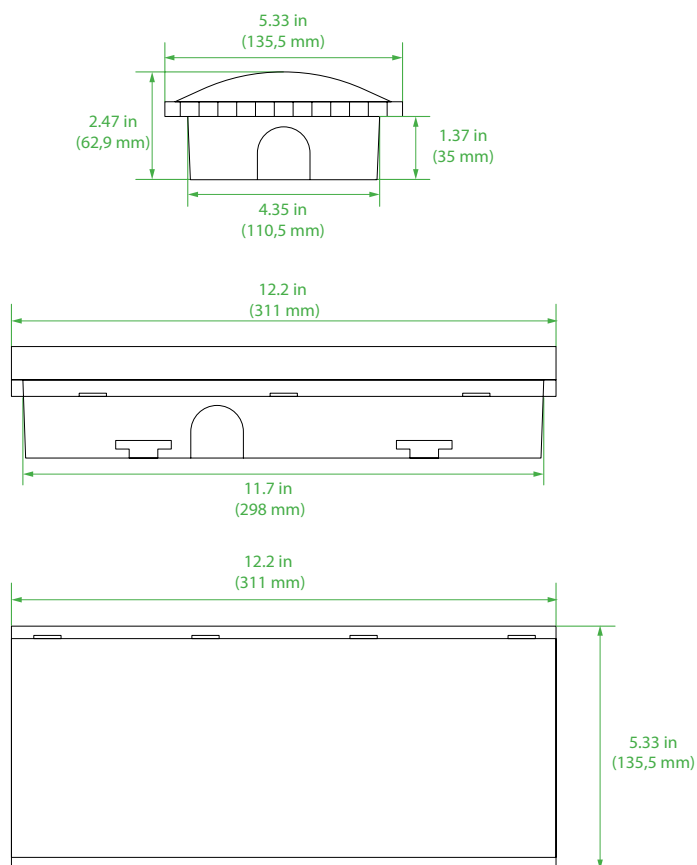


## LESL Series

LED Exit Sign Light 4Watt 260Lumens

*LED exit sing lights available with various pictograms available for use as lead, and emergency/exit lights. Standard supplied with 3hours battery powered emergency circuit and self-test option. Ceiling- or wall mount available.*

### Dimensions



### Technical Information

<b>Material:</b>	Flame resistant ABS and poly carbonate cover
<b>Viewing distance:</b>	24m
<b>IP Rating:</b>	IP65
<b>Light Source:</b>	4Watt
	65Lumens per Watt
	Cool White 6000K
	CRI > 80
<b>Power Source:</b>	220-240Vac 50~60Hz (120Vac optional)
	3hours battery powered emergency circuit
<b>Charge time:</b>	24 hours
<b>Ambient Temperature:</b>	Operating temperature +45°
<b>Cable Entry:</b>	4 x M20 gland with internal 3-pole terminal block
<b>Installation:</b>	Screw (heavy spring clips for ceiling max. 1.37 in (35 mm))
<b>Mounting:</b>	Surface mount (recessed mount optional)
<b>Fixture weight:</b>	1.87 lbs (0,85 kg)

### Compliances

ENEC certified

CB certified

SAA certified

In compliance with rules of maritime classification societies, additional VDE and IEC 60092-306.

(Equipment luminaires and lighting accessories for use on vessels)



## LESL Series

LED Exit Sign Light 4Watt 260Lumens

### Ordering information

Article No.:	Viewing Distance	Light Colour	Voltage	Finish	Specialties
LESL-4W-3HR-120-CM	24mtr	6000K Cool White	100-120Vac 50~60Hz	White	Ceiling Mount
LESL-4W-3HR-120-WM	24mtr	6000K Cool White	100-120Vac 50~60Hz	White	Wall Mount
LESL-4W-3HR-220-CM	24mtr	6000K Cool White	220-240Vac 50~60Hz	White	Ceiling Mount
LESL-4W-3HR-220-WM	24mtr	6000K Cool White	220-240Vac 50~60Hz	White	Wall Mount

### Special Projects

We may be able to accommodate your special projects, so please don't hesitate to ask about additional options. Minimum order quantities and/or extended lead times will apply. Contact your E-LED Lighting representative with specific inquiries.

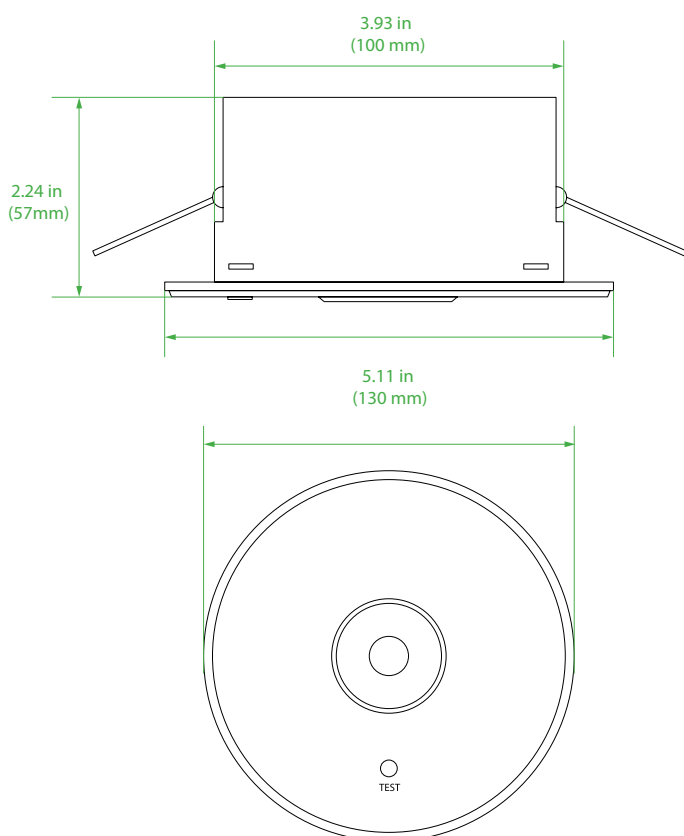
## ERL Series

LED Escape Route Lighting 12Watt 800Lumens

*Round, recessed mount LED escape route light. Standard supplied with 3hours battery powered emergency circuit and self-test option.*



### Dimensions



### Technical Information

<b>Material:</b>	Flame resistant ABS and poly carbonate cover
<b>IP Rating:</b>	IP20
<b>Light Source:</b>	12Watt
	65Lumens per Watt
	Cool White 6000K
	CRI > 80
<b>Power Source:</b>	220-240Vac 50~60Hz (100-120Vac optional)
	3hours battery powered emergency circuit
<b>Charge time:</b>	24 hours
<b>Ambient Temperature:</b>	Operating temperature +45°
<b>Cable Entry:</b>	1 x M20 gland with internal 3-pole terminal block
<b>Installation:</b>	Heavy spring clips for ceilings max. 1.37 in (35 mm)
<b>Mounting:</b>	Recessed mount
<b>Fixture weight:</b>	0.66 lbs (0,3 kg)

### Compliances

ENEC certified

CB certified

SAA certified

In compliance with rules of maritime classification societies, additional VDE and IEC 60092-306.

(Equipment luminaires and lighting accessories for use on vessels)

## ERL Series

LED Escape Route Lighting 12Watt 800Lumens

### Ordering information

Article No.:	Beam Angle	Light Colour	Voltage	Finish	Specialties
ERL-1W-3HR-220-RM	Wide narrow beam 140°	6000K Cool White	200-240Vac 50~60Hz	White	3hours battery powered emergency circuit

### Special Projects

We may be able to accommodate your special projects, so please don't hesitate to ask about additional options. Minimum order quantities and/or extended lead times will apply. Contact your E-LED Lighting representative with specific inquiries.

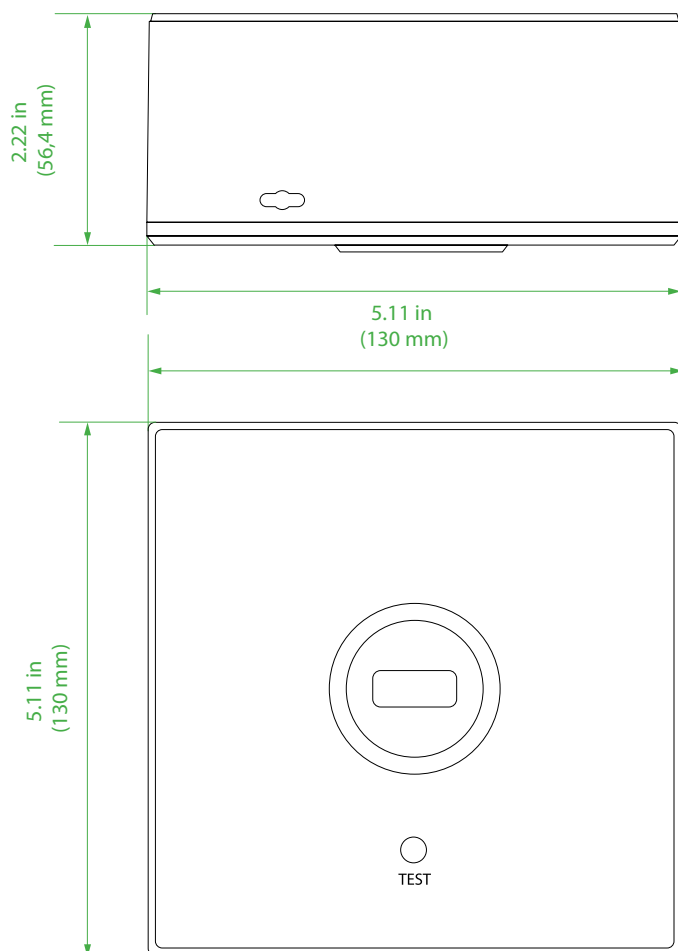
## ERL Series

LED Escape Route Lighting 12Watt 800Lumens

*Square, surface mount LED escape route light. Standard supplied with 3hours battery powered emergency circuit and self-test option.*



### Dimensions



### Technical Information

<b>Material:</b>	Flame resistant ABS and poly carbonate cover
<b>IP Rating:</b>	IP20
<b>Light Source:</b>	12Watt
	65Lumens per Watt
	Cool White 6000K
	CRI > 80
<b>Power Source:</b>	220-240Vac 50~60Hz (100-120Vac optional)
	3hours battery powered emergency circuit
<b>Charge time:</b>	24 hours
<b>Ambient Temperature:</b>	Operating temperature +45°
<b>Cable Entry:</b>	1 x M20 gland with internal 3-pole terminal block
<b>Installation:</b>	Screw mount
<b>Mounting:</b>	Surface mount
<b>Fixture weight:</b>	0.66 lbs (0,3 kg)

### Compliances

ENEC certified

CB certified

SAA certified

In compliance with rules of maritime classification societies, additional VDE and IEC 60092-306.

(Equipment luminaires and lighting accessories for use on vessels)

## ERL Series

LED Escape Route Lighting 12Watt 800Lumens

### Ordering information

Article No.:	Beam Angle	Light Colour	Voltage	Finish	Specialties
ERL-1W-3HR-220-SM	Wide narrow beam 140°	6000K Cool White	200-240Vac 50~60Hz	White	3hours battery powered emergency circuit

### Special Projects

We may be able to accommodate your special projects, so please don't hesitate to ask about additional options. Minimum order quantities and/or extended lead times will apply. Contact your E-LED Lighting representative with specific inquiries.

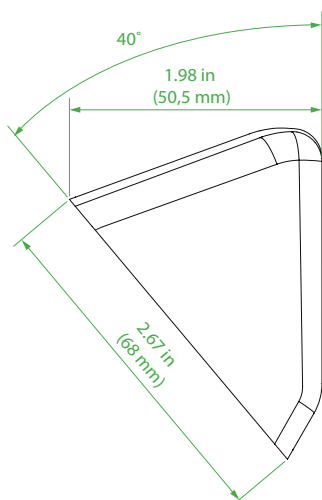
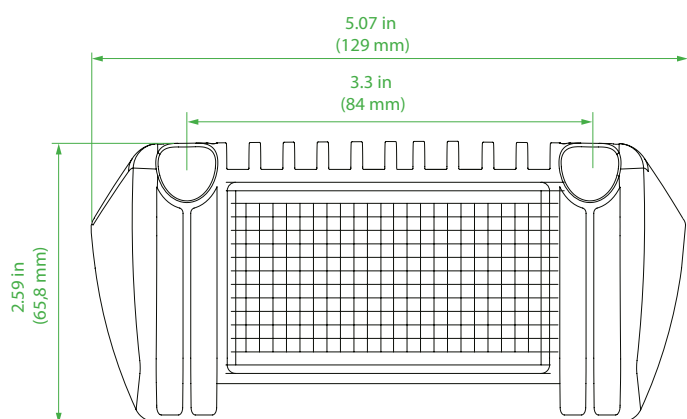
## MPWL Series

Multi-Purpose Wall Light 7Watt 700Lumens

*Multi-Purpose light for decks and technical in- and outdoor applications such as escape lighting, gangway lighting entrance lighting etc. Standard supplied with rubber isolating pad.*



### Dimensions



### Technical Information

<b>Material:</b>	Powder coated anodized seawater resistant aluminium
<b>Finish:</b>	White
<b>Lens:</b>	120°
<b>IP Rating:</b>	IP67
<b>Light Source:</b>	7Watt 100Lumens per Watt Natural White 3900K CRI > 85
<b>Power Source:</b>	10-30Vdc
<b>Ambient Temperature:</b>	Operating temperature -20°C ~ +45°
<b>Cable:</b>	13.77 x (2) 0.02 in (350mm 2 x 0,75mm) (optional 30mm wiring with Bullet connectors*1)
<b>Mounting:</b>	Surface
<b>Fixture weight:</b>	0.88 lbs (0,4 kg)

### Compliances

In compliance with rules of maritime classification societies, additional VDE and IEC 60092-306.  
(Equipment luminaires and lighting accessories for use on vessels)

## MPWL Series

Multi-Purpose Wall Light 7Watt 700Lumens

### Ordering information

Article No.:	Beam Angle	Light Colour	Voltage	Finish	Specialties
MPWL-7W-39-WH-LV	Wide beam 120°	3900K Natural White	10-30Vdc	White	Supplied with isolating rubber pad

### Special Projects

We may be able to accommodate your special projects, so please don't hesitate to ask about additional options. Minimum order quantities and/or extended lead times will apply. Contact your E-LED Lighting representative with specific inquiries.

## LLL Series

LED Locker Light 7Watt 350Lumens

*Locker light for various interior- and exterior applications with minimal space for lighting installation but with need for lighting. Standard supplied with dual colour white/red with both colours dimmable.*



### Technical Information

<b>Material:</b>	Polyamide (PA) + polycarbonate cover
<b>Finish:</b>	White
<b>Lens:</b>	180°
<b>IP Rating:</b>	IP66
<b>Light Source:</b>	7Watt 50Lumens per Watt 3000K Warm White + RED circuit CRI > 80
<b>Power Source:</b>	10-30Vdc
<b>Ambient Temperature:</b>	Operating temperature -20°C ~ +45°
<b>Cable:</b>	
<b>Mounting:</b>	Surface – Fixed aluminium bracket
<b>Fixture weight:</b>	1.54 lbs (0,7 kg)

### Compliances

In compliance with rules of maritime classification societies, additional VDE and IEC 60092-306.  
(Equipment luminaires and lighting accessories for use on vessels)



## LLL Series

LED Locker Light 7Watt 350Lumens

### Ordering information

Article No.:	Beam Angle	Light Colour	Voltage	Finish	Specialties
LLL-7W-30WH-LV	Wide beam 180°	3000K Warm White + RED	10-30Vdc	White	White- and red lights dimmable by touch buttons

### Special Projects

We may be able to accommodate your special projects, so please don't hesitate to ask about additional options. Minimum order quantities and/or extended lead times will apply. Contact your E-LED Lighting representative with specific inquiries.

## WL Series

LED Wall Light 6Watt 600Lumens

*Wall mount series applicable for interior areas such as cabins, offices, mess room, corridors etc. Available with a dimmable driver on request.*



### Dimensions

### Technical Information

<b>Material:</b>	Powder coated anodized aluminium
<b>Finish:</b>	White
<b>Lens:</b>	120°
<b>IP Rating:</b>	IP44
<b>Light Source:</b>	6Watt
	100Lumens per Watt
	3900K Natural White
	CRI > 85
<b>Power Source:</b>	85-265Vac 50~60Hz (dimmable option available)
<b>Ambient Temperature:</b>	Operating temperature -20°C ~ +45°
<b>Cable:</b>	
<b>Mounting:</b>	Fixed aluminium bracket
<b>Fixture weight:</b>	0.88 lbs (0,4 kg)

### Compliances

In compliance with rules of maritime classification societies, additional VDE and IEC 60092-306.  
(Equipment luminaires and lighting accessories for use on vessels)

## WL Series

LED Wall Light 6Watt 600Lumens

### Ordering information

Article No.:	Beam Angle	Light Colour	Voltage	Finish	Specialties
WL-6W-140-30-WH-HV	Wide beam 120°	3000K Warm White	85-265Vac 50~60Hz	White	
WLD-6W-140-30-WH-HV	Wide beam 120°	3000K Warm White	220-240Vac 50~60Hz	White	Supplied with dimmable driver
WL-6W-200-30-WH-HV	Wide beam 120°	3000K Warm White	85-265Vac 50~60Hz	White	
WLD-6W-200-30-WH-HV	Wide beam 120°	3000K Warm White	220-240Vac 50~60Hz	White	Supplied with dimmable driver

### Special Projects

We may be able to accommodate your special projects, so please don't hesitate to ask about additional options. Minimum order quantities and/or extended lead times will apply. Contact your E-LED Lighting representative with specific inquiries.

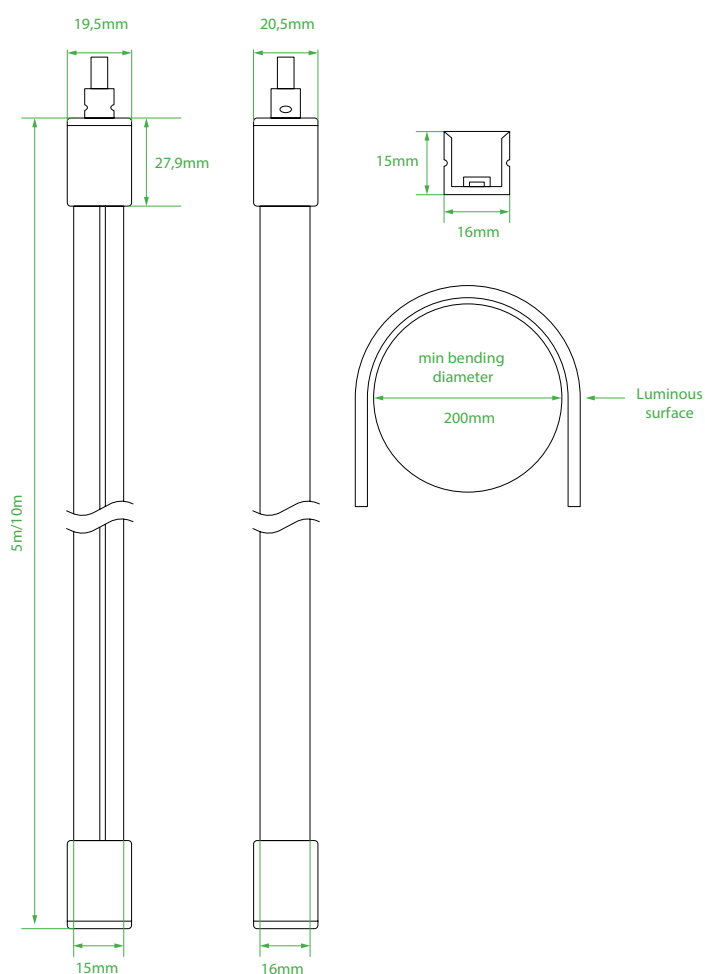
## LNFT WR Series

### Double Circuit LED Neon Flex White- and Red

LED Neon Flex is high light output, UV resistant, saltwater resistant, high temperature resistant, direct- or indirect LED neon flex strip. Due to the possibility to cut every 35mm and the two separate circuits there are many possibilities with this high-quality product. Standard supplied with U profile bracket for the complete length.



### Dimensions



### Technical Information

<b>Material:</b>	Environmental protected silicone
<b>Lens:</b>	140°
<b>IP Rating:</b>	IP67
<b>Light Source:</b>	5Watt per meter per circuit
	100Lumens per Watt
	Natural White 3.900K & Red
	CRI > 90
<b>Power Source:</b>	Stabilized 24Vdc (Voltage stabilizer available on request)
<b>Ambient Temperature:</b>	Operating temperature -30°C ~ +55°
<b>Cut:</b>	Every 50mm
<b>Max length:</b>	5mtr
<b>Mounting:</b>	Surface Mount with aluminium U-shaped profile

### Compliances

ETL certified, UL listed, RoHS

In compliance with rules of maritime classification societies, additional VDE and IEC 60092-306.

(Equipment luminaires and lighting accessories for use on vessels)

## LNFT WR Series

Double Circuit LED Neon Flex White- and Red

### Ordering information

Article No.:	Beam Angle	Light Colour	Voltage	Finish	Specialties
LNFT-WH/RD-0.5-24	Wide beam 140°	3900K Natural White + Red	24Vdc	White Silicon	Standard supplied U shaped bracket & dimmable with DRK dimmer series
LNFT-WH/RD-1-24	Wide beam 140°	3900K Natural White + Red	24Vdc	White Silicon	Standard supplied U shaped bracket & dimmable with DRK dimmer series
LNFT-WH/RD-1.5-24	Wide beam 140°	3900K Natural White + Red	24Vdc	White Silicon	Standard supplied U shaped bracket & dimmable with DRK dimmer series
LNFT-WH/RD-2-24	Wide beam 140°	3900K Natural White + Red	24Vdc	White Silicon	Standard supplied U shaped bracket & dimmable with DRK dimmer series
LNFT-WH/RD-2.5-24	Wide beam 140°	3900K Natural White + Red	24Vdc	White Silicon	Standard supplied U shaped bracket & dimmable with DRK dimmer series
LNFT-WH/RD-3-24	Wide beam 140°	3900K Natural White + Red	24Vdc	White Silicon	Standard supplied U shaped bracket & dimmable with DRK dimmer series
LNFT-WH/RD-3.5-24	Wide beam 140°	3900K Natural White + Red	24Vdc	White Silicon	Standard supplied U shaped bracket & dimmable with DRK dimmer series
LNFT-WH/RD-4-24	Wide beam 140°	3900K Natural White + Red	24Vdc	White Silicon	Standard supplied U shaped bracket & dimmable with DRK dimmer series
LNFT-WH/RD-4.5-24	Wide beam 140°	3900K Natural White + Red	24Vdc	White Silicon	Standard supplied U shaped bracket & dimmable with DRK dimmer series
LNFT-WH/RD-5-24	Wide beam 140°	3900K Natural White + Red	24Vdc	White Silicon	Standard supplied U shaped bracket & dimmable with DRK dimmer series

### Special Projects

We may be able to accommodate your special projects, so please don't hesitate to ask about additional options. Minimum order quantities and/or extended lead times will apply. Contact your E-LED Lighting representative with specific inquiries.

Product design and specifications are subject to change without notice. The most current specification sheets can be found at [www.E-LEDLighting.com](http://www.E-LEDLighting.com)